

## Serie P350.10

Printklemme

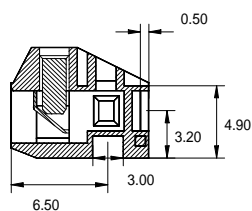
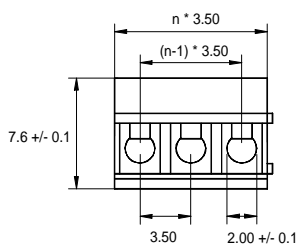
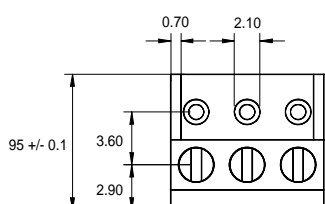
Raster 3,50 mm



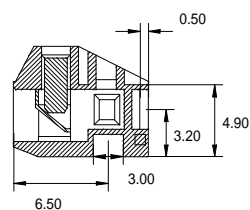
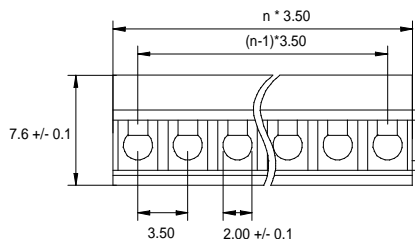
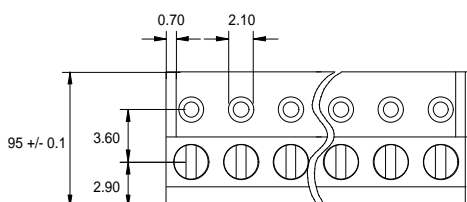
### Technische Daten

<b>Kontaktmaterial:</b>	Messing	<b>Nennstrom:</b>	10 AMP
<b>Kontaktfläche:</b>	Standard: Verzinnt	<b>Isolationswiderstand:</b>	1000 MΩ Min.
		<b>Kontaktwiderstand:</b>	10m ΩMax.
		<b>Durchschlagsspannung:</b>	1500V AC/Minute
<b>Isolierkörper:</b>	Nylon , UL 94V-0	<b>Nennspannung:</b>	150V AC,DC
		<b>Temperaturbereich:</b>	-30°C ... +105°C

Type 1



Type 2



### BESTELLBEZEICHNUNG

**P350.10 – 02**

SERIE	POHLZAHL 2= 1 x 2 (max. 02 – 24)
-------	--