

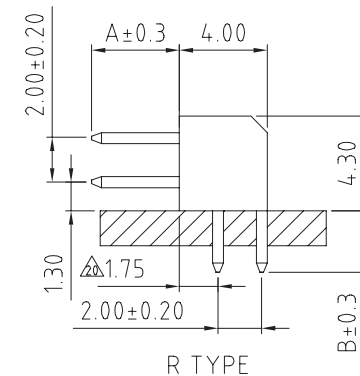
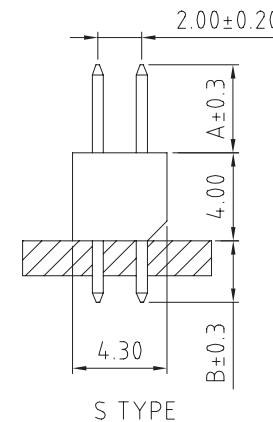
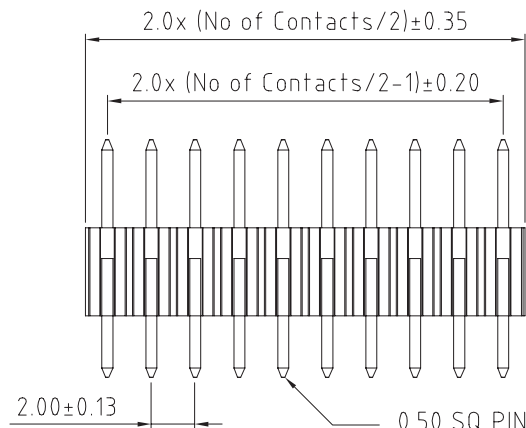
BB02-FG :- 2.00mm x 2.0mm (0.079" x 0.079") PIN HEADER, DUAL ROW, STRAIGHT OR RIGHT ANGLE - 04 to 80 CONTACTS

SPECIFICATIONS

CURRENT RATING	2 AMP Δ
INSULATOR RESISTANCE	1000 MEGOHMS MIN.
DIELECTRIC WITHSTANDING	AC 500 V
CONTACT RESISTANCE	20 MEGOHMS MAX.
OPERATING TEMPERATURE	-40°C TO +105°C
CONTACT MATERIAL	BRASS
INSULATOR MATERIAL	THERMOPLASTIC, UL 94V-0 STANDARD = NYLON 6T Δ
PLATING	GOLD, TIN, OR SELECTIVE OVER 30~50U" NICKEL
SOLDERABILITY:	IR REFLOW: 260°C FOR 10 SEC WAVE: 230°C FOR 5-10 SEC MANUAL SOLDER: 350°C FOR 3-5

PACKED IN TUBE OR TRAY Δ

MATES WITH :- BB02-GH BB02-GT
BB02-GK BB02-GY
BB02-GL BB02-GZ
BB02-GM BB02-RG
BB02-GP BB02-RJ
BB02-GQ BB02-RX



HOW TO ORDER

BB02 - FGXX1 - XB3 - XXXXX0

NO. OF CONTACTS
04 TO 80 Δ

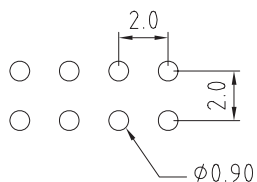
CONTACT PLATING OPTIONS Δ Δ

K = GOLD FLASH (STANDARD)
A = 10U" GOLD ON CONTACT/GOLD FLASH ON TAIL
B = 15U" GOLD ON CONTACT/GOLD FLASH ON TAIL
C = 30U" GOLD ON CONTACT/GOLD FLASH ON TAIL
T = BRIGHT TIN
M = MATT TIN
D = GOLD FLASH ON CONTACT/TIN ON TAIL
E = 10U" GOLD ON CONTACT/TIN ON TAIL
F = 15U" GOLD ON CONTACT/TIN ON TAIL
G = 30U" GOLD ON CONTACT/TIN ON TAIL

PIN LENGTH A (1/10mm)
PLEASE SPECIFY PIN
LENGTH REQUIRED
I.E. 2.5mm = 25
STANDARD = 40

PIN LENGTH B (1/10mm)
PLEASE SPECIFY PIN
LENGTH REQUIRED
I.E. 2.5mm = 25
STANDARD = 28
(MIN. 1.65MM)

CONNECTOR TYPE
S = STRAIGHT
R = RIGHT ANGLE



(TOLERANCE: ±0.05)

RECOMMENDED PC BOARD HOLE LAYOUT

REV.	DATE & DRN
10	27/05/03 - NJR RELEASE
11	03/03/04 - NJR
12	29/07/04 - NYW
13	28/4/05 - CHC
14	05/09/05 - NYW
15	09/08/06 - NYW
16	24/11/06 - NYW
17	25/07/07 - CHC
18	16/01/08 - NYW
19	31/12/08 - CHC
20	23/02/11 - NYW

Scale:	4:1	THIRD ANGLE	Unstated Tolerances: X ± 0.30 X ± 0.25 XX ± 0.15 XXX ± 0.10	Material	SEE NOTE
Drawn:	CHC	Title	PIN HEADER	NOT TO SCALE	
App'd:	XXXX	Date:	23 FEB '11	Unit:	mm
		Revision:	2.0		

THIS DRAWING IS CONFIDENTIAL AND MUST NOT BE
COPIED OR DISCLOSED WITHOUT WRITTEN CONSENT

Type: BB02-FG

BB02-FG

Drawing Number:

Sheet 1 of 1

Drawing © E and O E