

BB02-KS - 2.54mm x 2.54mm (0.1" x 0.1") SMD SOCKET, DUAL ROW, STRAIGHT 04 to 80 CONTACTS, DUAL ENTRY

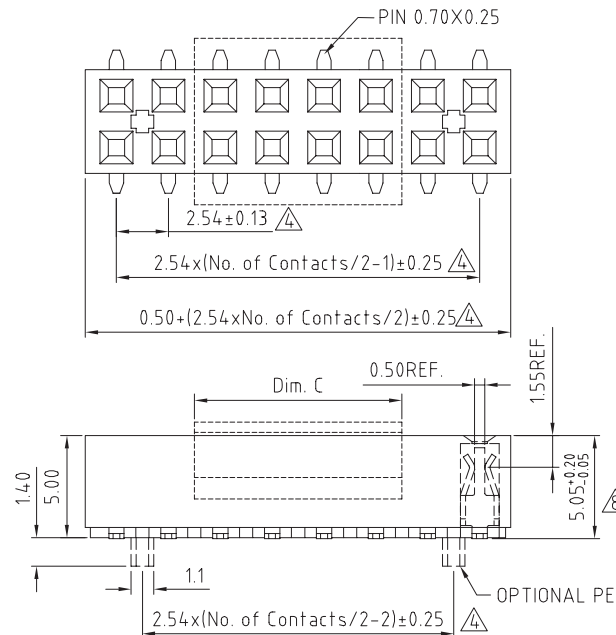
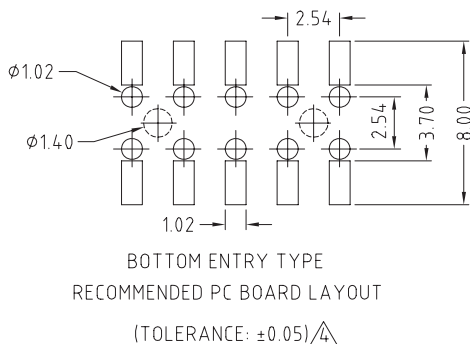
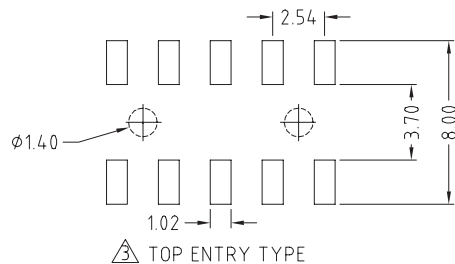
## SPECIFICATIONS

CURRENT RATING	3 AMP
INSULATOR RESISTANCE	1000 MEG OHMS MIN.
CONTACT RESISTANCE	20M OHMS MAX.
DIELECTRIC WITHSTANDING	600V AC/DC
OPERATING TEMPERATURE	-40°C TO +105°C
CONTACT MATERIAL	PHOSPHOR BRONZE
INSULATOR MATERIAL	THERMOPLASTIC, UL94V-0
FINISH	STANDARD: NYLON 6T GOLD, TIN OR SELECTIVE OVER 30-50U" NICKEL
SOLDERABILITY	IR REFLOW: 260°C FOR 10 SEC MANUAL SOLDER: 350°C FOR 3-5 SEC

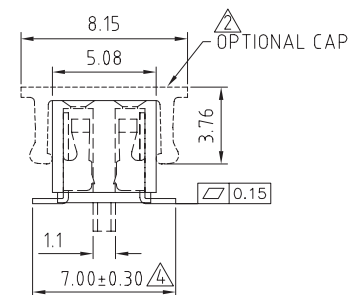
## NOTES:

1. RECOMMENDED MATING PIN LENGTH FOR TOP ENTRY: 4.5MM.

MATES WITH : BB02-HE BB02-HR BB02-TH  
BB02-HF BB02-HU  
BB02-HJ BB02-TD  
BB02-HP BB02-TF  
BB02-HQ BB02-TG



Dim. C	NOTE
4.00mm	04~16pins
10.15mm	18~80pins



## HOW TO ORDER

B B 0 2 - K S X X 2 - X 0 X - X 0 0 0 0 0

NO OF  
CONTACTS  
04 TO 80

## CONTACT PLATING OPTIONS

K = GOLD FLASH (STANDARD)  
A = 10U" GOLD ON CONTACT/GOLD FLASH ON TAIL  
B = 15U" GOLD ON CONTACT/GOLD FLASH ON TAIL  
C = 30U" GOLD ON CONTACT/GOLD FLASH ON TAIL  
T = BRIGHT TIN  
M = MATT TIN  
D = GOLD FLASH ON CONTACT/BRIGHT TIN ON TAIL  
E = 10U" GOLD ON CONTACT/BRIGHT TIN ON TAIL  
F = 15U" GOLD ON CONTACT/BRIGHT TIN ON TAIL  
G = 30U" GOLD ON CONTACT/BRIGHT TIN ON TAIL

## PACKAGING OPTIONS

3 - TUBE  
5 - TUBE & CAP  
6 - T & R  
8 - T & R & CAP

## WITH OR WITHOUT LOCATING PEG

A = WITH (MIN. 6 CONTACTS) Δ  
B = WITHOUT

REV. DATE & DRN	10 18/07/05-NYM RELEASE
11 09/08/05-CHC	11 09/08/05-CHC
12 02/05/07-NYM	12 02/05/07-NYM
13 30/05/07-NYM	13 30/05/07-NYM
14 07/06/07-CHC	14 07/06/07-CHC
15 06/07/07-CHC	15 06/07/07-CHC
16 28/05/08-PN	16 28/05/08-PN
17 20/02/09-CHC	17 20/02/09-CHC
18 01/03/10-NYM	18 01/03/10-NYM

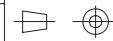
Scale 4=1

Drawn CHC

App'd XXX

Date 01 MAR '10

THIRD ANGLE



Title: SOCKET

Revision : 1.8

Unstated Tolerance
X. ± 0.30
.X ± 0.25
.XX ± 0.15
.XXX ± 0.10

Material  
SEE NOTE

NOT TO SCALE

Unit: mm

THIS DRAWING IS CONFIDENTIAL AND MUST NOT BE  
COPIED OR DISCLOSED WITHOUT WRITTEN CONSENT

Type BB02-KS

BB02-KS

Drawing Number

Sheet 1 of 1

Drawing C E and OE