

BB02-KY

CUSTOMER PRODUCT SPECIFICATION SHEET

RoHS
Compliant

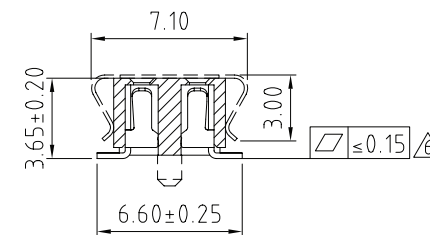
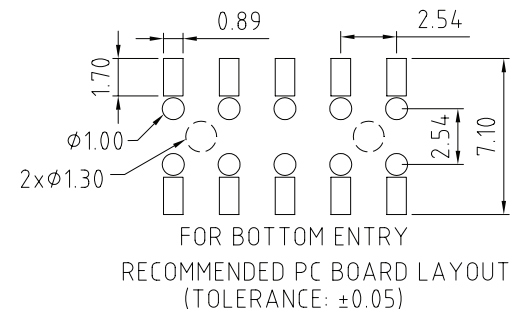
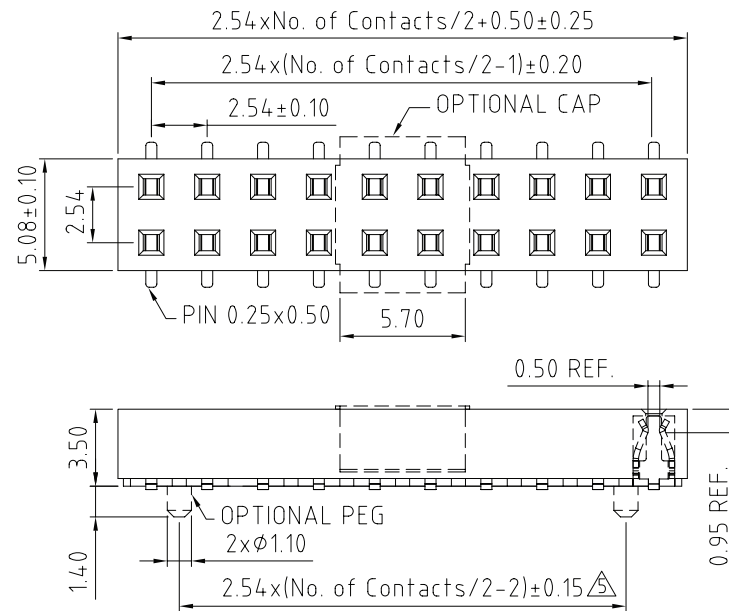
BB02-KY :-2.54mm X 2.54mm (0.1" X 0.1") SOCKET, STRAIGHT, SMD, DUAL ROW - 04 to 80 CONTACTS, DUAL ENTRY

SPECIFICATIONS

CURRENT RATING	3 AMP
INSULATOR RESISTANCE	1000 MEGOHMS MIN.
CONTACT RESISTANCE	20m ohms MAX.
DIELECTRIC WITHSTANDING	AC 600 V
OPERATING TEMPREATURE	-40°C TO +105°C
CONTACT MATERIAL	PHOSPHOR BRONZE
INSULATOR MATERIAL	POLYESTER, UL 94V-0 Δ STANDARD NYLON 6T(T5)+30%G.F. (LCP AVAILABLE UPON REQUEST)
PLATING	GOLD, TIN OR SELECTIVE OVER 30-50U" NICKEL
SOLDERABILITY	IR REFLOW: 260°C FOR 10 SEC WAVE: 230°C FOR 5-10 SEC MANNUAL SOLDER: 350°C FOR 3-5 SEC

MATES WITH: BB02-HE BB02-HQ BB02-TF
BB02-HF BB02-HR BB02-TG
BB02-HJ BB02-HU
BB02-HP BB02-TD

NOTES:

1. RECOMMANDED MATING PIN LENGTH FOR TOP ENTRY: 2.0MM. Δ 

HOW TO ORDER

B B 0 2 - K Y X X 2 - X 0 X - X 0 0 0 0 0

NO. OF CONTACTS
04 TO 80

CONTACT PLATING OPTIONS

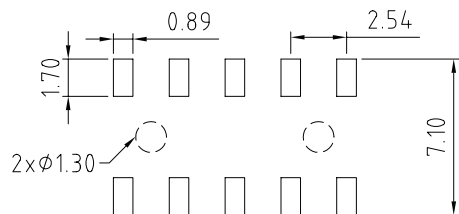
K = GOLD FLASH (STANDARD)
A = 10U" GOLD ON CONTACT/GOLD FLASH ON TAIL
B = 15U" GOLD ON CONTACT/GOLD FLASH ON TAIL
C = 30U" GOLD ON CONTACT/GOLD FLASH ON TAIL
T = BRIGHT TIN
M = MATT TIN
D = GOLD FLASH ON CONTACT/BRIGHT TIN ON TAIL
E = 10U" GOLD ON CONTACT/BRIGHT TIN ON TAIL
F = 15U" GOLD ON CONTACT/BRIGHT TIN ON TAIL
G = 30U" GOLD ON CONTACT/BRIGHT TIN ON TAIL

 Δ PACKAGING OPTIONS

3 - TUBE
5 - TUBE & CAP
6 - T & R
8 - T & R & CAP
STANDARD = 3

LOCATING PEG OPTION

A = WITH PEG
B = WITHOUT PEG

RECOMMENDED PC BOARD LAYOUT
(TOLERANCE: ±0.05)

REV.	DATE & DRN
10	16/10/05 - NYW RELEASE
11	30/10/05 - NYW
12	REMOVE PACK OPTION L, 7
13	30/07/07 - NYW
14	30/07/07 - NYW
15	30/07/08 - CHC
16	30/07/08 - CHC
17	28/05/08 - PN
18	ADD MATT TIN PLATING
19	17/09/08 - NYW
20	ADD COPLANARITY SPEC.
21	ADD LOCATING PEG DISTANCE
22	09/10/08 - NYW
23	AMEND COPLANARITY SPEC.
24	20/02/09 - CHC
25	DRAWING MODIFICATION

Scale: 4:1	THIRD ANGLE	Unstated Tolerances: X ± 0.30 X ± 0.25 .XX ± 0.15 .XXX ± 0.10	Material SEE NOTE
Drawn: CHC			
App'd: XXXX	Title SOCKET		NOT TO SCALE
Date: 20 FEB '09	Revision: 1.7		Unit: mm

THIS DRAWING IS CONFIDENTIAL AND MUST NOT BE
COPIED OR DISCLOSED WITHOUT WRITTEN CONSENT

Type: BB02-KY

BB02-KY

Drawing Number:

Sheet 1 of 1

Drawing © E and O E