

BB02-VB

CUSTOMER PRODUCT SPECIFICATION SHEET

RoHS
Compliant

BB02-VB: 5.08mm (0.2") HEADER, RIGHT ANGLE, THROUGH HOLE, SINGLE ROW - 02 to 20 CONTACTS

SPECIFICATIONS

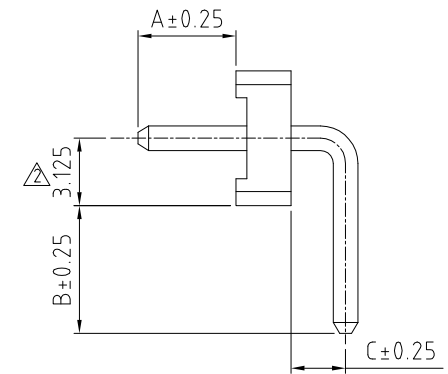
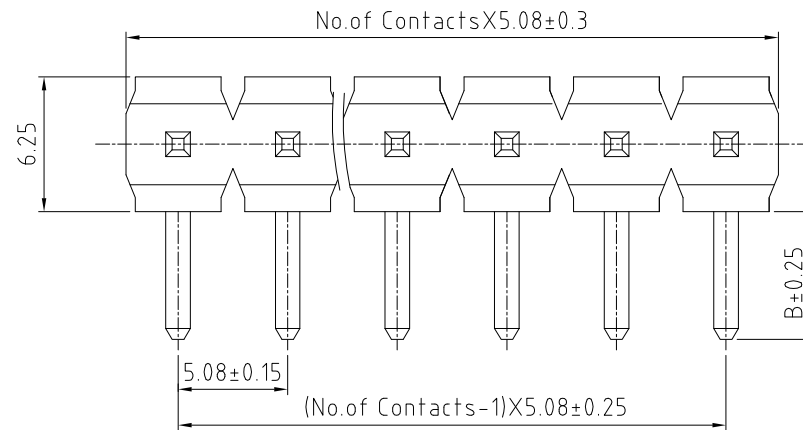
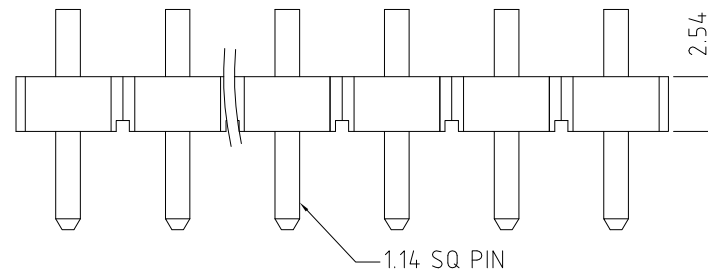
CURRENT RATING	7.9 AMP
INSULATOR RESISTANCE	1000 MEGOHMS MIN. Δ
CONTACT RESISTANCE	30m ohms MAX. Δ
DIELECTRIC WITHSTANDING	1000V AC/DC Δ
OPERATING TEMPERATURE	-40°C TO +105°C Δ
CONTACT MATERIAL	BRASS
INSULATOR MATERIAL	LCP+30%GF, UL 94V-0
PLATING	MATT TIN OVER 30-50U" NICKEL
SOLDERABILITY	IR REFLOW: 280°C FOR 10 SEC WAVE: 250°C FOR 5-10 SEC MANUAL SOLDER: 380°C FOR 3-5 SEC

PACKAGE: BULK IN BOX OR BAG.

MATES WITH: - BB02-VM
BB02-VN

NOTES:

- GOLD FLASH PLATING IS AVAILABLE UPON REQUEST, PLEASE CONTACT US FOR MORE INFORMATION.
- MINIMUM PIN LENGTH C = 1.2MM.



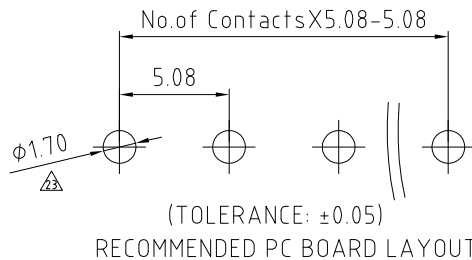
HOW TO ORDER

BB02 - VBX X 1 - M01 - X00000

NO. OF CONTACTS:
02 TO 20CONTACT PLATING OPTIONS:
M = MATT TIN (STANDARD)

PIN LENGTH OPTIONS:

A = A : 4.55, B : 8.10, C : 2.54
 Δ B = A : 3.20, B : 13.83, C : 5.56
 Δ C = A : 4.55, B : 8.10, C : 1.20
 Δ E = A : 4.29, B : 5.60, C : 16.15
 Δ F = A : 2.54, B : 13.83, C : 4.55
G = A : 2.40, B : 3.00, C : 4.55 (Tol.: ±0.1)
H = A : 3.95, B : 13.80, C : 4.95
J = A : 2.54, B : 13.83, C : 3.0
(CUSTOM LENGTH AVAILABLE UPON REQUEST)



(TOLERANCE: ±0.05)

RECOMMENDED PC BOARD LAYOUT

REV.	DATE & DRN
10	02/05/07 - NYW RELEASE
11	10/12/07 - NYW
12	28/11/08 - CHC
13	25/12/08 - NYW
14	05/12/09 - NYW
15	21/05/10 - CHC
16	17/08/10 - NYW
17	21/02/13 - NYW
18	28/10/13 - NYW
19	25/11/13 - NYW
20	03/04/14 - NYW
21	24/07/14 - NYW
22	07/08/14 - RJH
23	05/09/14 - NYW

Scale:	4:1	THIRD ANGLE	Unstated Tolerances: X ± 0.30 XX ± 0.25 XXX ± 0.10	Material SEE NOTE
Drawn:	NYW			
App'd:	XXXX	Title	HEADER	NOT TO SCALE
Date:	07 AUG '14	Revision:	2.2	Unit: mm

THIS DRAWING IS CONFIDENTIAL AND MUST NOT BE
COPIED OR DISCLOSED WITHOUT WRITTEN CONSENT

Type: BB02-VB

BB02-VB

Drawing Number:

Sheet 1 of 1

Drawing © E and O E