

BB02-VC: 5.08mm (0.2") HEADER, STRAIGHT, THROUGH HOLE, SINGLE ROW - 02 to 20 CONTACTS

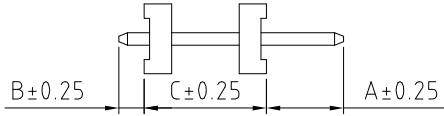
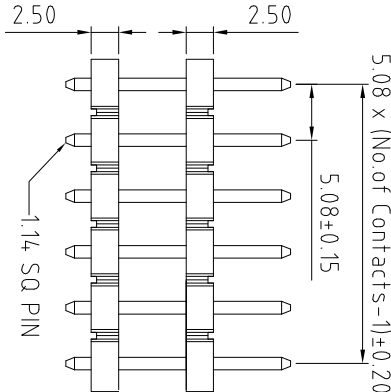
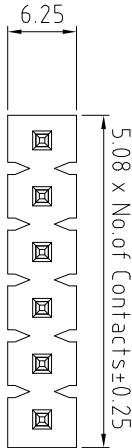
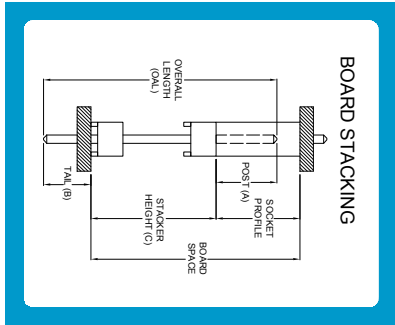
SPECIFICATIONS

CURRENT RATING	7.9 AMP
INSULATOR RESISTANCE	1000 MEGOHMS MIN. Δ
CONTACT RESISTANCE	30m ohms MAX. Δ
DIELECTRIC WITHSTANDING	1000V AC/DC Δ
OPERATING TEMPERATURE	-40°C TO +105°C Δ
CONTACT MATERIAL	BRASS
INSULATOR MATERIAL	LCP, UL 94V-0
PLATING:	MATTE TIN OVER 30-50U" NICKEL
SOLDERABILITY	IR REFLOW: 280°C FOR 10 SEC WAVE: 250°C FOR 5-10 SEC MANUAL SOLDER: 380°C FOR 3-5 SEC

PACKAGE: BULK.

MATES WITH: - BB02-VM
BB02-VN

- NOTES:
1. MAX. OAL (OVERALL PIN LENGTH A+C+B) = 29mm.
 2. GOLD FLASH PLATING IS AVAILABLE UPON REQUEST, PLEASE CONTACT US FOR MORE INFORMATION.



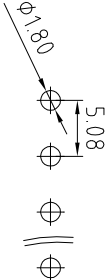
HOW TO ORDER



NO. OF CONTACTS: 02 TO 20
CONTACT PLATING OPTIONS: M = MATT TIN (STANDARD)

PIN LENGTH A (1/10mm) SPECIFY PIN LENGTH STANDARD = 60 = 6.0mm TOL.: ±0.25mm
PIN LENGTH B (1/10mm) SPECIFY PIN LENGTH STANDARD = 30 = 3.0mm TOL.: ±0.25mm
PIN LENGTH C (1/10mm) SPECIFY PIN LENGTH MINIMUM = 50 = 5.0mm MAXIMUM = SEE NOTE: 1 TOL.: ±0.25mm

LONGER PIN LENGTH REQUIRED?
If pin length required is longer than 9.9mm (99), then use a '/' to separate the numbers.
Example: A=6.0mm, B=3.0mm, C=12.5mm, mark as 60 / 30 / 125.



RECOMMENDED PC BOARD LAYOUT
(TOLERANCE: ±0.05mm)

REV.		DATE & DRN			
10	19/02/09 - CHC RELEASE				
11	05/03/09 - NYW REMOVE OTHER PLATING OPTIONS. ADD NOTES 2.				
12	09/02/12 - NYW AMEND PCB HOLE SIZE.				
13	24/07/14 - NYW Δ AMEND SPECIFICATION				