

SPECIFICATIONS

CURRENT RATING: 1AMP

INSULATOR RESISTANCE: 500 MEGOHMS MIN.

DIELECTRIC WITHSTANDING: AC 600 V

CONTACT RESISTANCE: 20m OHMS MAX.

OPERATING TEMPERATURE: -40°C TO +105°C

CONTACT MATERIAL: BRASS

INSULATOR MATERIAL: THERMOPLASTIC, UL 94V-0

STANDARD: LCP

PLATING: GOLD FLASH OR TIN OVER 30-50U" NICKEL

SOLDERABILITY      IR REFLOW: 280°C FOR 10 SEC

                             WAVE: 250°C FOR 5-10 SEC

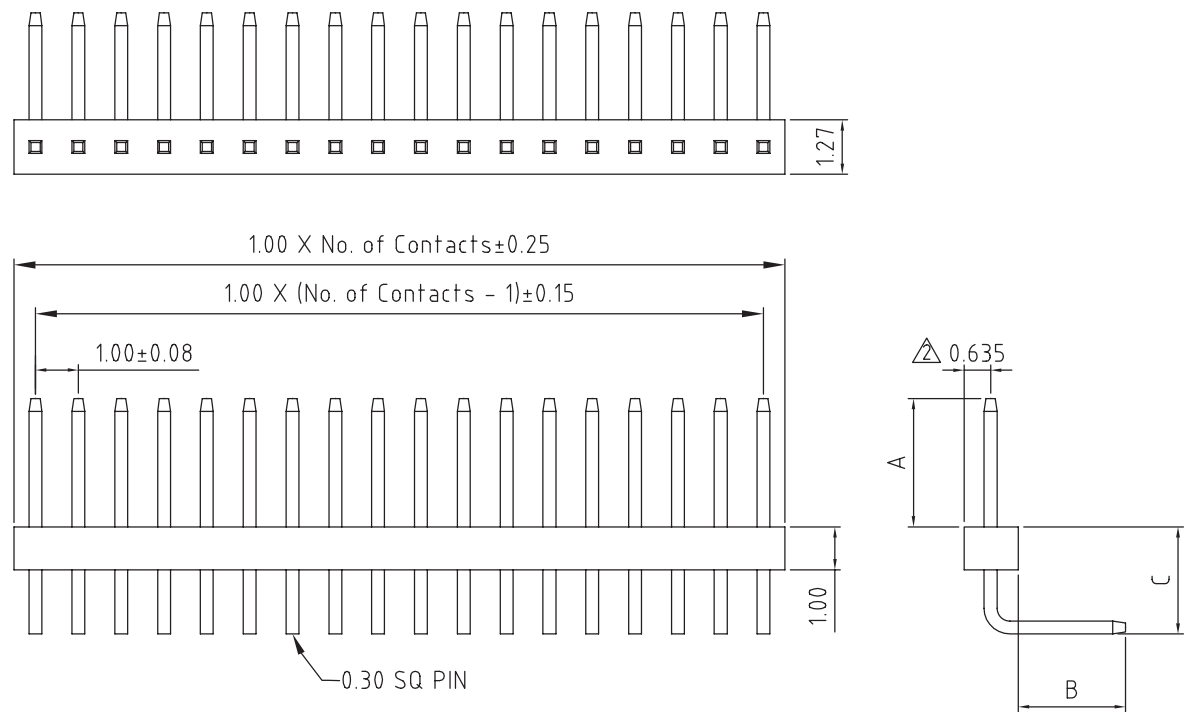
                             MANUAL SOLDER: 380°C FOR 3-5 SEC

PACKAGING: LOOSE IN BOX.

MATES WITH: - BB02-WD

                  BB02-WE

                  BB02-WF



# HOW TO ORDER

B

B

0

2

-

Y

M

X

X

1

-

X

0

1

-

X

X

X

X

X

X

NO. OF CONTACTS

04 to 40

CONTACT PLATING OPTIONS

K = GOLD FLASH (STANDARD)

T = BRIGHT TIN

M = MATT TIN

PIN LENGTH A (1/10mm)

PLEASE SPECIFY PIN LENGTH REQUIRED

I.E. 2.5mm = 25

TOL. ±0.25mm

STANDARD = 15

PIN LENGTH B (1/10mm)

PLEASE SPECIFY PIN LENGTH REQUIRED

I.E. 2.5mm = 25

TOL. ±0.25mm

STANDARD = 25

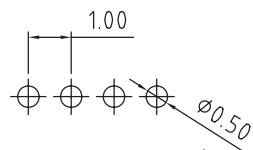
PIN LENGTH C (1/10mm)

PLEASE SPECIFY PIN LENGTH REQUIRED

I.E. 2.5mm = 25

TOL. ±0.25mm

STANDARD = 25



RECOMMENDED PCB HOLE LAYOUT