



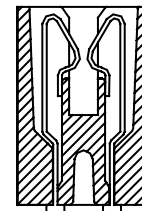
Sullins Edgcards

1.00 mm [.039"] Contact Centers, 15.49 mm Insulator Height
Dip Solder/Card Extender/SMT

SPECIFICATIONS

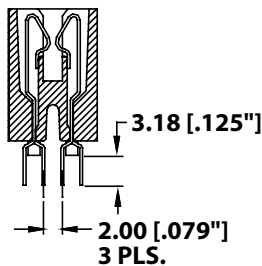
- Accommodates 1.57 mm \pm .20 [.062" \pm .008"] PC board
- PPS or PA9T insulator
- Molded-in key available
- 1 amp current rating per contact
- Highly reliable high cycle hairpin bellow contacts
- 150 grams normal force minimum

READOUT

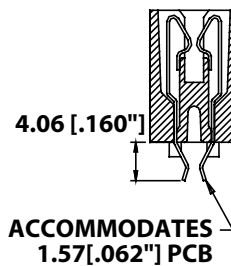


DUAL (D)

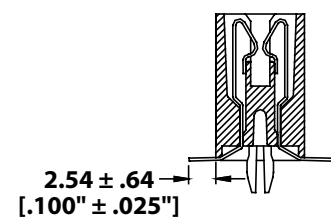
TERMINATION TYPE



STAGGERED DIP SOLDER
(HH)

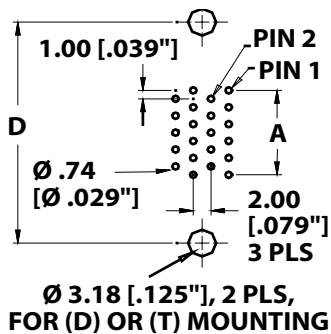


CARD EXTENDER
(HR)

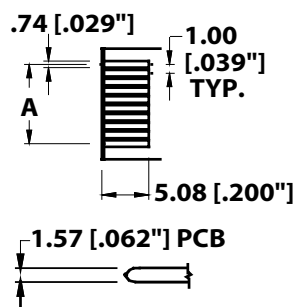


SURFACE MOUNT
(HF)

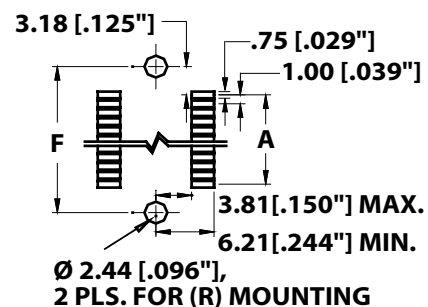
PCB LAYOUT



CONNECTOR SIDE (HH)

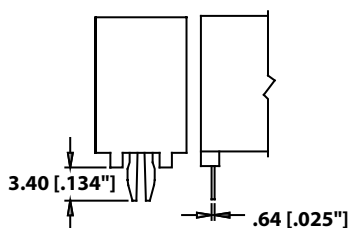


SOLDER END (HR)



CONNECTOR SIDE (HF)

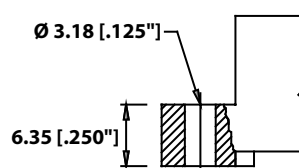
MOUNTING STYLE



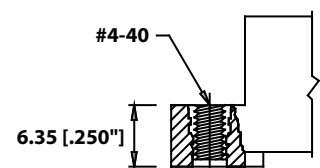
BOARD LOCK (R)



NO MOUNTING EARS (N)



FLUSH MOUNTING (D)



THREADED INSERT (T)

1.00 mm [.039"] Contact Centers, 15.49mm Insulator Height
Dip Solder/Card Extender/SMT

PART NUMBER CODING

MATERIALS (INSULATOR/CONTACT)

R = PPS/Phosphor Bronze
G = PA9T/Phosphor Bronze
A = PPS/Beryllium Copper
J = PA9T/Beryllium Copper

CONTACT FINISH - RoHS Compliant

All platings are Lead Free and have .000050" Nickel underplate

Contact Surface

	Contact Surface	Termination
B =	.000010" Gold	.000100" Pure Tin, Matte
C =	.000030" Gold	.000100" Pure Tin, Matte

CONTACT CENTERS

E = 1.00mm [.039"]

G B E 50 D HH D -Sxxx

— **MODIFICATION CODE** (Consult Factory)
OMIT FOR STANDARD

– **MOUNTING STYLE** (Opposite Page)

D=Flush Mounting
N=No Mounting
R=Metal Board Lock
T=Flush Mounting, #4-40 Threaded Insert

- **TERMINATION TYPE (Opposite Page)**

HH=Staggered Dip Solder
HR=Card Extender
HF=Surface Mount

—READOUT (Opposite Page)

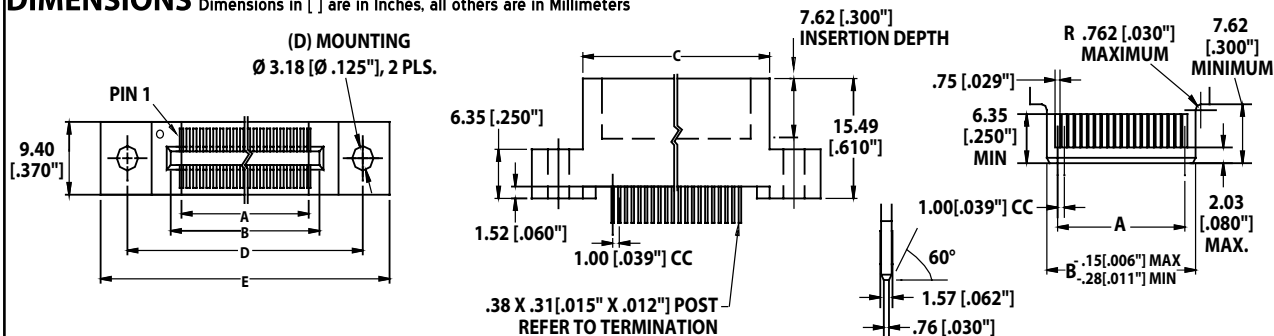
D=Dual

NUMBER OF CONTACT POSITIONS

See Chart Below

DIMENSIONS

Dimensions in [] are in Inches, all others are in Millimeters



POSITIONS/ CONTACTS	MILLIMETERS						[INCHES]					
	A	B	C	D	E	F	A	B	C	D	E	F
	±.13	±.13	±.38	±.25	±.51	±.25	±.005	±.005	±.015	±.010	±.020	±.010
02/04*	1.00	4.32	9.89	17.15	25.13	7.35	0.039	0.170	0.389	0.675	0.989	0.289
03/06*	2.00	5.32	10.89	18.15	26.13	8.35	0.079	0.210	0.429	0.715	1.029	0.329
04/08*	3.00	6.32	11.89	19.15	27.13	9.35	0.118	0.249	0.468	0.754	1.068	0.368
05/10	4.00	7.32	12.89	20.15	28.13	10.35	0.157	0.288	0.507	0.793	1.107	0.407
06/12	5.00	8.32	13.89	21.15	29.13	11.35	0.197	0.328	0.547	0.833	1.147	0.447
07/14	6.00	9.32	14.89	22.15	30.13	12.35	0.236	0.367	0.586	0.872	1.186	0.486
08/16	7.00	10.32	15.89	23.15	31.13	13.35	0.276	0.407	0.626	0.912	1.226	0.526
09/18	8.00	11.32	16.89	24.15	32.13	14.35	0.315	0.446	0.665	0.951	1.265	0.565
10/20	9.00	12.32	17.89	25.15	33.13	15.35	0.354	0.485	0.704	0.990	1.304	0.604
11/22	10.00	13.32	18.89	26.15	34.13	16.35	0.394	0.525	0.744	1.030	1.344	0.644
12/24	11.00	14.32	19.89	27.15	35.13	17.35	0.433	0.564	0.783	1.069	1.383	0.683
13/26	12.00	15.32	20.89	28.15	36.13	18.35	0.472	0.603	0.822	1.108	1.422	0.722
14/28	13.00	16.32	21.89	29.15	37.13	19.35	0.512	0.643	0.862	1.148	1.462	0.762
15/30	14.00	17.32	22.89	30.15	38.13	20.35	0.551	0.682	0.901	1.187	1.501	0.801
16/32	15.00	18.32	23.89	31.15	39.13	21.35	0.591	0.722	0.941	1.227	1.541	0.841
17/34	16.00	19.32	24.89	32.15	40.13	22.35	0.630	0.761	0.980	1.266	1.580	0.880
18/36	17.00	20.32	25.89	33.15	41.13	23.35	0.669	0.800	1.019	1.305	1.619	0.919
19/38	18.00	21.32	26.89	34.15	42.13	24.35	0.709	0.840	1.059	1.345	1.659	0.959
20/40	19.00	22.32	27.89	35.15	43.13	25.35	0.748	0.879	1.098	1.384	1.698	0.998
21/42	20.00	23.32	28.89	36.15	44.13	26.35	0.787	0.918	1.137	1.423	1.737	1.037
22/44	21.00	24.32	29.89	37.15	45.13	27.35	0.827	0.958	1.177	1.463	1.777	1.077
23/46	22.00	25.32	30.89	38.15	46.13	28.35	0.866	0.997	1.216	1.502	1.816	1.116
24/48	23.00	26.32	31.89	39.15	47.13	29.35	0.906	1.037	1.256	1.542	1.856	1.156
25/50	24.00	27.32	32.89	40.15	48.13	30.35	0.945	1.076	1.295	1.581	1.895	1.195
26/52	25.00	28.32	33.89	41.15	49.13	31.35	0.984	1.115	1.334	1.620	1.934	1.234
27/54	26.00	29.32	34.89	42.15	50.13	32.35	1.024	1.155	1.374	1.660	1.974	1.274
28/56	27.00	30.32	35.89	43.15	51.13	33.35	1.063	1.194	1.413	1.699	2.013	1.313
29/58	28.00	31.32	36.89	44.15	52.13	34.35	1.102	1.233	1.452	1.738	2.052	1.352
30/60	29.00	32.32	37.89	45.15	53.13	35.35	1.142	1.273	1.492	1.778	2.092	1.392
31/62	30.00	33.32	38.89	46.15	54.13	36.35	1.181	1.312	1.531	1.817	2.131	1.431
32/64	31.00	34.32	39.89	47.15	55.13	37.35	1.220	1.351	1.570	1.856	2.170	1.470
33/66	32.00	35.32	40.89	48.15	56.13	38.35	1.260	1.391	1.610	1.896	2.210	1.510
34/68	33.00	36.32	41.89	49.15	57.13	39.35	1.299	1.430	1.649	1.935	2.249	1.549
35/70	34.00	37.32	42.89	50.15	58.13	40.35	1.339	1.470	1.689	1.975	2.289	1.589
36/72	35.00	38.32	43.89	51.15	59.13	41.35	1.378	1.509	1.728	2.014	2.328	1.628
37/74	36.00	39.32	44.89	52.15	60.13	42.35	1.417	1.548	1.767	2.053	2.367	1.667
38/76	37.00	40.32	45.89	53.15	61.13	43.35	1.457	1.588	1.807	2.093	2.407	1.707
39/78	38.00	41.32	46.89	54.15	62.13	44.35	1.496	1.627	1.846	2.132	2.446	1.746
40/80	39.00	42.32	47.89	55.15	63.13	45.35	1.535	1.666	1.885	2.171	2.485	1.785
41/82	40.00	43.32	48.89	56.15	64.13	46.35	1.575	1.706	1.925	2.211	2.525	1.825
42/84	41.00	44.32	49.89	57.15	65.13	47.35	1.614	1.745	1.964	2.250	2.564	1.864
43/86	42.00	45.32	50.89	58.15	66.13	48.35	1.654	1.785	2.004	2.290	2.604	1.904
44/88	43.00	46.32	51.89	59.15	67.13	49.35	1.693	1.824	2.043	2.329	2.643	1.943
45/90	44.00	47.32	52.89	60.15	68.13	50.35	1.732	1.863	2.082	2.368	2.682	1.982
46/92	45.00	48.32	53.89	61.15	69.13	51.35	1.772	1.903	2.122	2.408	2.722	2.022
47/94	46.00	49.32	54.89	62.15	70.13	52.35	1.811	1.942	2.161	2.447	2.761	2.061
48/96	47.00	50.32	55.89	63.15	71.13	53.35	1.850	1.981	2.200	2.486	2.800	2.100
49/98	48.00	51.32	56.89	64.15	72.13	54.35	1.890	2.021	2.240	2.526	2.840	2.140
50/100	49.00	52.32	57.89	65.15	73.13	55.35	1.929	2.060	2.279	2.565	2.879	2.179

* Consult Factory For Availability

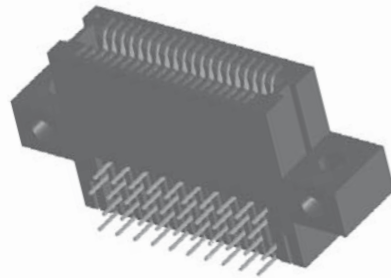


Sullins Edgards

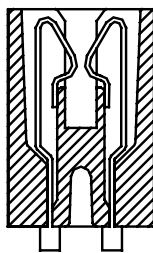
1.00 mm [.039"] Contact Centers, 21.84 mm Insulator Height Right Angle

SPECIFICATIONS

- Accommodates 1.57 mm \pm .20 [.062" \pm .008"] PC board
- PA9T or PPS insulator
- Molded-in key available
- High reliability/high cycle hairpin bellows contact
- 1 amp current rating per contact
- 150 grams normal force minimum

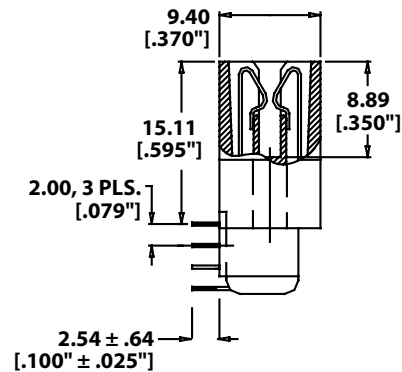


READOUT

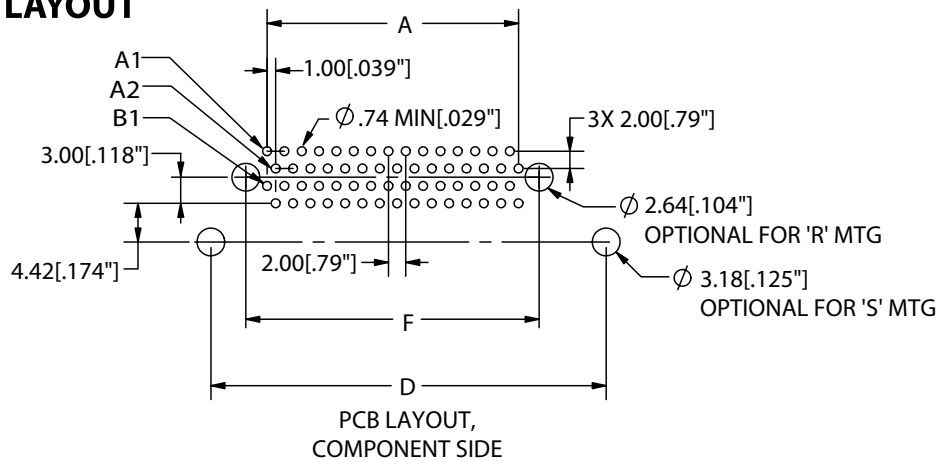


DUAL (D)

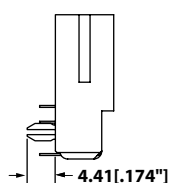
TERMINATION TYPE



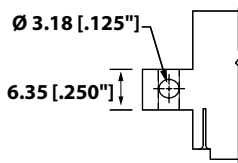
PCB LAYOUT



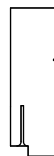
MOUNTING STYLE



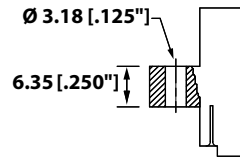
BOARD LOCK (R)
(with no mounting ears)



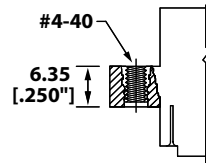
SIDE MOUNTING (S)



NO MOUNTING EARS (N)



CLEARANCE HOLE (D)



THREADED INSERT (T)

1.00 mm [.039"] Contact Centers, 21.84 mm Insulator Height Right Angle

PART NUMBER CODING

MATERIALS (INSULATOR/CONTACT)

R = PPS/Phosphor Bronze
G = PA9T/Phosphor Bronze
A = PPS/Beryllium Copper
J = PA9T/Beryllium Copper

CONTACT FINISH - RoHS Compliant

All platings are Lead Free and have .000050" Nickel underplate

Contact Surface	Termination
B = .000010" Gold	.000100" Pure Tin, Matte
C = .000030" Gold	.000100" Pure Tin, Matte

CONTACT CENTERS

E = 1mm [.039"]

G B E 50 D HA D - Sxxx

MODIFICATION CODE (Consult Factory)
OMIT FOR STANDARD

MOUNTING STYLE (Opposite Page)

D = Flush Mounting
N = No Mounting
R = Metal Board Lock
S = Side Mounting
T = Flush Mounting with Threaded Insert

TERMINATION TYPE (Opposite Page)

HA = Staggered Dip Solder, Right Angle

READOUT (Opposite Page)

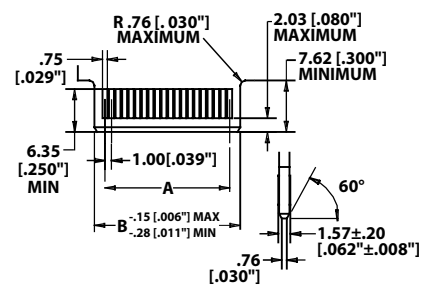
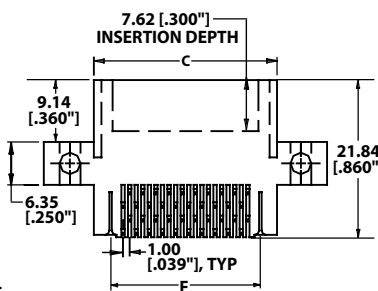
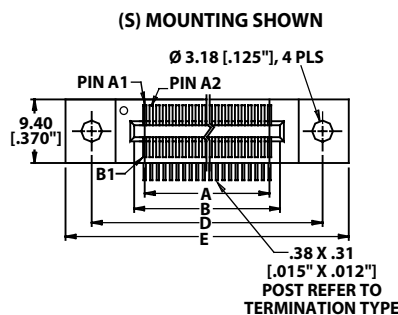
D = Dual

NUMBER OF CONTACT POSITIONS

See Chart Below

DIMENSIONS

Dimensions in [] are in Inches, all others are in Millimeters



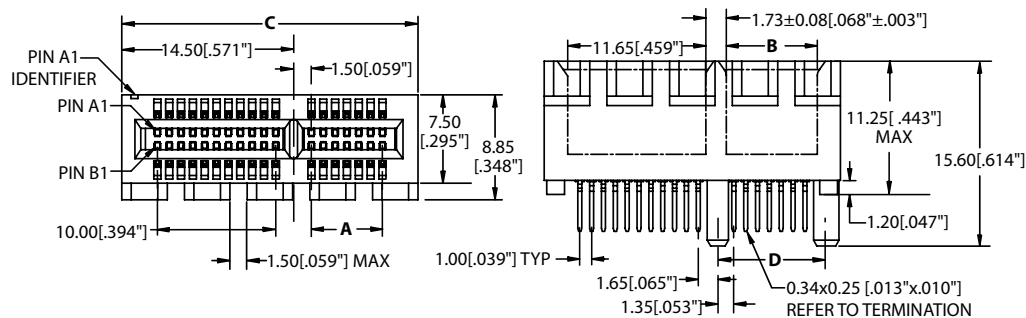
POSITIONS/ CONTACTS	MILLIMETERS						[INCHES]					
	A ±.13	B ±.13	C ±.38	D ±.25	E ±.51	F ±.25	A ±.005	B ±.005	C ±.015	D ±.010	E ±.020	F ±.010
02/04*	1.00	4.32	9.89	17.15	25.13	7.35	0.039	0.170	0.389	0.675	0.989	0.289
03/06*	2.00	5.32	10.89	18.15	26.13	8.35	0.079	0.210	0.429	0.715	1.029	0.329
04/08*	3.00	6.32	11.89	19.15	27.13	9.35	0.118	0.249	0.468	0.754	1.068	0.368
05/10	4.00	7.32	12.89	20.15	28.13	10.35	0.157	0.288	0.507	0.793	1.107	0.407
06/12	5.00	8.32	13.89	21.15	29.13	11.35	0.197	0.328	0.547	0.833	1.147	0.447
07/14	6.00	9.32	14.89	22.15	30.13	12.35	0.236	0.367	0.586	0.872	1.186	0.486
08/16	7.00	10.32	15.89	23.15	31.13	13.35	0.276	0.407	0.626	0.912	1.226	0.526
09/18	8.00	11.32	16.89	24.15	32.13	14.35	0.315	0.446	0.665	0.951	1.265	0.565
10/20	9.00	12.32	17.89	25.15	33.13	15.35	0.354	0.485	0.704	0.990	1.304	0.604
11/22	10.00	13.32	18.89	26.15	34.13	16.35	0.394	0.525	0.744	1.030	1.344	0.644
12/24	11.00	14.32	19.89	27.15	35.13	17.35	0.433	0.564	0.783	1.069	1.383	0.683
13/26	12.00	15.32	20.89	28.15	36.13	18.35	0.472	0.603	0.822	1.108	1.422	0.722
14/28	13.00	16.32	21.89	29.15	37.13	19.35	0.512	0.643	0.862	1.148	1.462	0.762
15/30	14.00	17.32	22.89	30.15	38.13	20.35	0.551	0.682	0.901	1.187	1.501	0.801
16/32	15.00	18.32	23.89	31.15	39.13	21.35	0.591	0.722	0.941	1.227	1.541	0.841
17/34	16.00	19.32	24.89	32.15	40.13	22.35	0.630	0.761	0.980	1.266	1.580	0.880
18/36	17.00	20.32	25.89	33.15	41.13	23.35	0.669	0.800	1.019	1.305	1.619	0.919
19/38	18.00	21.32	26.89	34.15	42.13	24.35	0.709	0.840	1.059	1.345	1.659	0.959
20/40	19.00	22.32	27.89	35.15	43.13	25.35	0.748	0.879	1.098	1.384	1.698	0.998
21/42	20.00	23.32	28.89	36.15	44.13	26.35	0.787	0.918	1.137	1.423	1.737	1.037
22/44	21.00	24.32	29.89	37.15	45.13	27.35	0.827	0.958	1.177	1.463	1.777	1.077
23/46	22.00	25.32	30.89	38.15	46.13	28.35	0.866	0.997	1.216	1.502	1.816	1.116
24/48	23.00	26.32	31.89	39.15	47.13	29.35	0.906	1.037	1.256	1.542	1.856	1.156
25/50	24.00	27.32	32.89	40.15	48.13	30.35	0.945	1.076	1.295	1.581	1.895	1.195
26/52	25.00	28.32	33.89	41.15	49.13	31.35	0.984	1.115	1.334	1.620	1.934	1.234
27/54	26.00	29.32	34.89	42.15	50.13	32.35	1.024	1.155	1.374	1.660	1.974	1.274
28/56	27.00	30.32	35.89	43.15	51.13	33.35	1.063	1.194	1.413	1.699	2.013	1.313
29/58	28.00	31.32	36.89	44.15	52.13	34.35	1.102	1.233	1.452	1.738	2.052	1.352
30/60	29.00	32.32	37.89	45.15	53.13	35.35	1.142	1.273	1.492	1.778	2.092	1.392
31/62	30.00	33.32	38.89	46.15	54.13	36.35	1.181	1.312	1.531	1.817	2.131	1.431
32/64	31.00	34.32	39.89	47.15	55.13	37.35	1.220	1.351	1.570	1.856	2.170	1.470
33/66	32.00	35.32	40.89	48.15	56.13	38.35	1.260	1.391	1.610	1.896	2.210	1.510
34/68	33.00	36.32	41.89	49.15	57.13	39.35	1.299	1.430	1.649	1.935	2.249	1.549
35/70	34.00	37.32	42.89	50.15	58.13	40.35	1.339	1.470	1.689	1.975	2.289	1.589
36/72	35.00	38.32	43.89	51.15	59.13	41.35	1.378	1.509	1.728	2.014	2.328	1.628
37/74	36.00	39.32	44.89	52.15	60.13	42.35	1.417	1.548	1.767	2.053	2.367	1.667
38/76	37.00	40.32	45.89	53.15	61.13	43.35	1.457	1.588	1.807	2.093	2.407	1.707
39/78	38.00	41.32	46.89	54.15	62.13	44.35	1.496	1.627	1.846	2.132	2.446	1.746
40/80	39.00	42.32	47.89	55.15	63.13	45.35	1.535	1.666	1.885	2.171	2.485	1.785
41/82	40.00	43.32	48.89	56.15	64.13	46.35	1.575	1.706	1.925	2.211	2.525	1.825
42/84	41.00	44.32	49.89	57.15	65.13	47.35	1.614	1.745	1.964	2.250	2.564	1.864
43/86	42.00	45.32	50.89	58.15	66.13	48.35	1.654	1.785	2.004	2.290	2.604	1.904
44/88	43.00	46.32	51.89	59.15	67.13	49.35	1.693	1.824	2.043	2.329	2.643	1.943
45/90	44.00	47.32	52.89	60.15	68.13	50.35	1.732	1.863	2.082	2.368	2.682	1.982
46/92	45.00	48.32	53.89	61.15	69.13	51.35	1.772	1.903	2.122	2.408	2.722	2.022
47/94	46.00	49.32	54.89	62.15	70.13	52.35	1.811	1.942	2.161	2.447	2.761	2.061
48/96	47.00	50.32	55.89	63.15	71.13	53.35	1.850	1.981	2.200	2.486	2.800	2.100
49/98	48.00	51.32	56.89	64.15	72.13	54.35	1.890	2.021	2.240	2.526	2.840	2.140
50/100	49.00	52.32	57.89	65.15	73.13	55.35	1.929	2.060	2.279	2.565	2.879	2.179

* Consult Factory For Availability



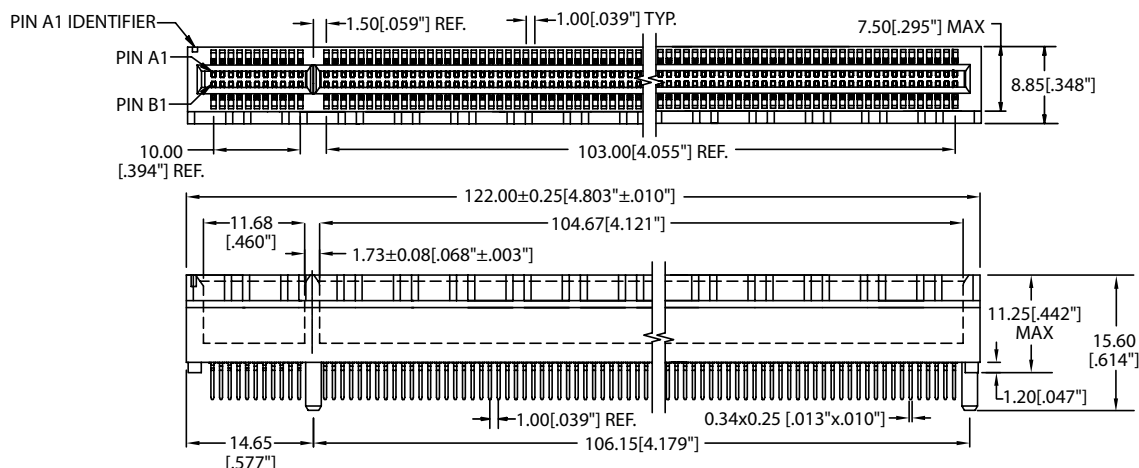
**1.00 mm [.039"] Contact Centers, PCI Express,
Dip Solder**

DIMENSIONS Dimensions in [] are in Inches, all others are in Millimeters

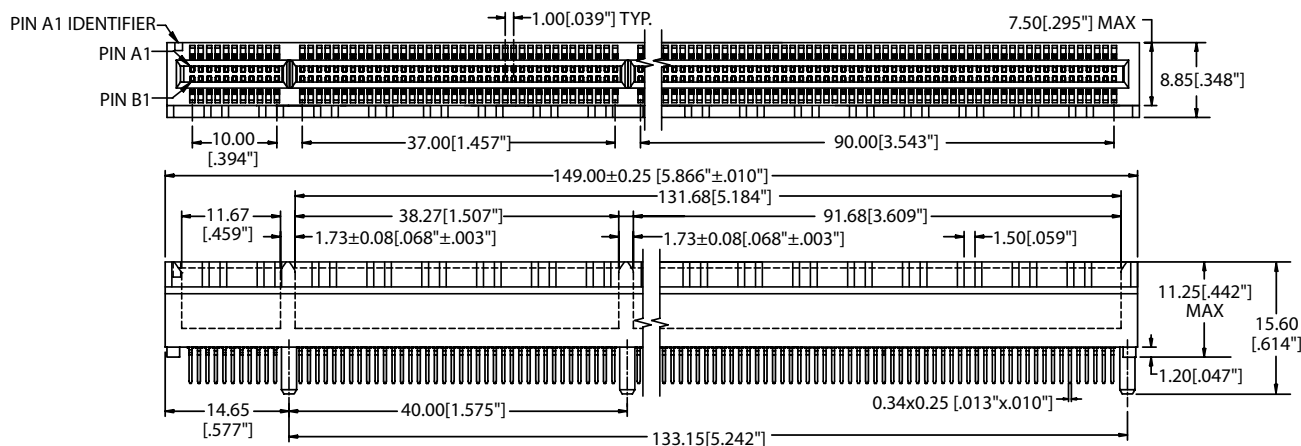


STAGGERED DIP SOLDER (HH)

POSITIONS/ CONTACTS	MILLIMETERS				[INCHES]			
	A ± 0.15	B ± 0.15	C ± 0.15	D ± 0.15	A ± 0.006"	B ± 0.006"	C ± 0.006"	D ± 0.006"
18/36	6.00	7.65	25.00	9.15	0.236	0.301	0.984	0.360
32/64	20.00	21.65	39.00	23.15	0.787	0.852	1.535	0.911
49/98	37.00	38.65	56.00	40.15	1.457	1.522	2.205	1.581
82/164	70.00	71.65	89.00	73.15	2.756	2.821	3.504	2.880



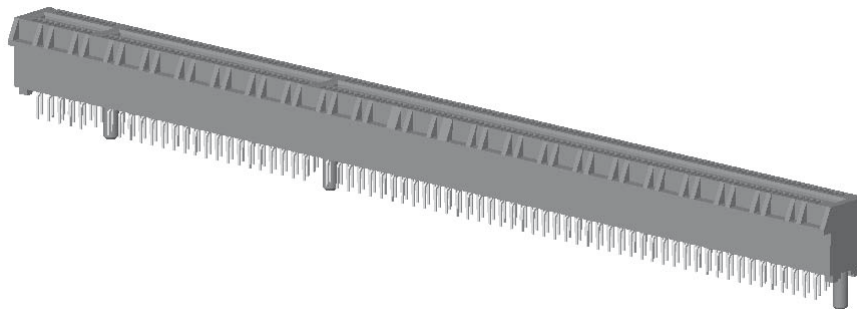
115/230 POSITION, STAGGERED DIP SOLDER (HH)



140/280 POSITION, STAGGERED DIP SOLDER (HH)

PART NUMBER CODING

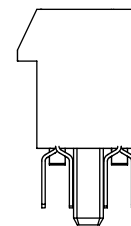
MATERIALS (INSULATOR/CONTACT)	N	P	E	18	D	HH	N	-T9	2	1	COLOR
N = Nylon 6T/Phosphor Bronze											1 = Black Other Options Available
CONTACT FINISH - RoHS Compliant											TAIL LENGTH
All platings are Lead Free and have .000050" Nickel underplate											1 = 2.30mm [.091"] 2 = 2.54mm [.100"] 3 = 3.00mm [.118"]
Contact Surface											MOUNTING STYLE
B = .000010" Gold											N = No Mounting
C = .000030" Gold											TERMINATION TYPE
P = Gold Flash Overall											HH = Staggered Dip Solder
CONTACT CENTERS											READOUT
E = 1mm [.039"]											D = Dual
NUMBER OF CONTACT POSITIONS											
18, 32, 49, 82, 115, 140											



SPECIFICATIONS

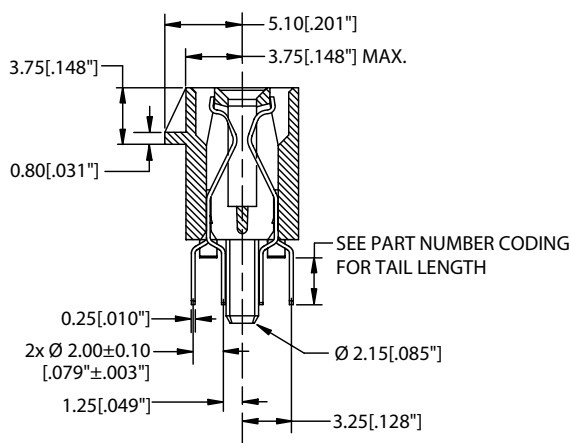
- All PCI Express parts meet the latest PCI Express specifications
- Supports 2.5 Gb/s Data Transfer Rate (per pair data bandwidth)
- Accommodates 1.57mm \pm 0.20mm [.062" \pm .008"] PC board
- Nylon 6T insulator
- 1.1 amp current rating per contact

READOUT



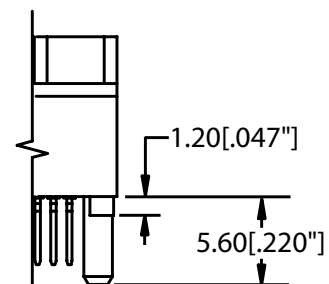
DUAL (D)

TERMINATION TYPE



Staggered Dip Solder (HH)

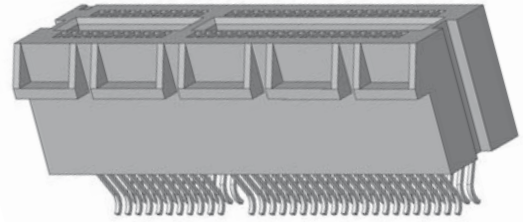
MOUNTING STYLE



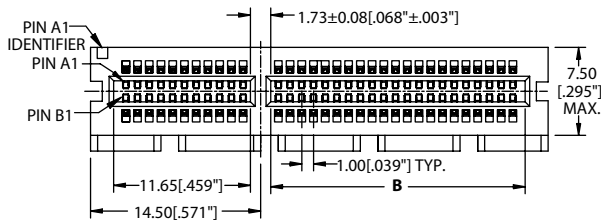
No Mounting Ears (N)

Sullins Edgecards

**1.00 mm [.039"] Contact Centers, PCI Express,
Card Extender for Surface Mount**

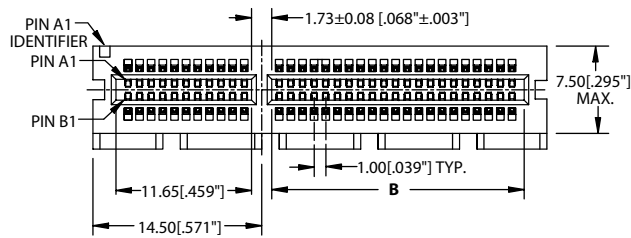
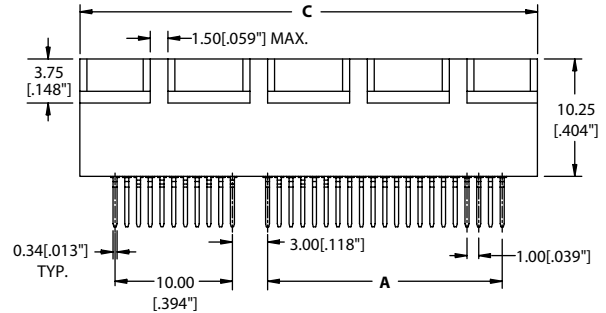


DIMENSIONS Dimensions in [] are in Inches, all others are in Millimeters



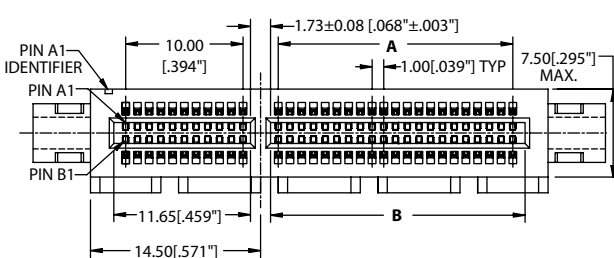
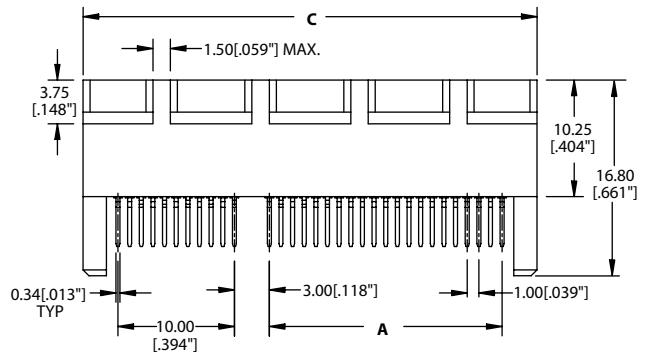
STRADDLE MOUNT

Example Part Number: NPE18DHRN-T941



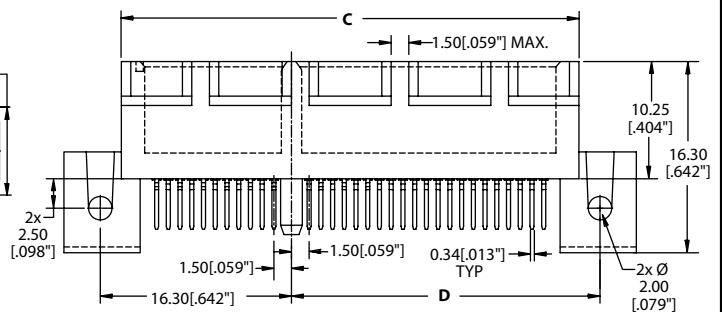
STRADDLE MOUNT with PEGS

Example Part Number: NPE18DHRN-T9410



STRADDLE MOUNT with CLIPS

Example Part Number: NPE18DHRQ-T941



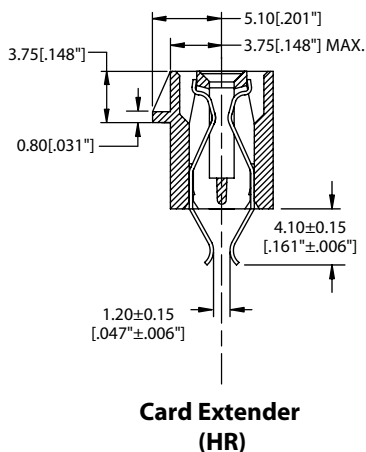
POSITIONS/ CONTACTS	MILLIMETERS				[INCHES]			
	A ± 0.15	B ± 0.15	C ± 0.15	D ± 0.15	A ± 0.006"	B ± 0.006"	C ± 0.006"	D ± 0.006"
18/36	6.00	7.65	25.00	9.15	0.236	0.301	0.984	0.360
32/64	20.00	21.65	39.00	23.15	0.787	0.852	1.535	0.911
49/98	37.00	38.65	56.00	40.15	1.457	1.522	2.205	1.581
82/164	70.00	71.65	89.00	73.15	2.756	2.821	3.504	2.880

**1.00 mm [.039"] Contact Centers, PCI Express,
Card Extender for Surface Mount**

PART NUMBER CODING

MATERIALS (INSULATOR/CONTACT) N = Nylon 6T/Phosphor Bronze	N	P	E	18	D	HR	N	-T9	4	1	0	MODIFICATION CODE OMIT FOR STANDARD 0 = Pegs
CONTACT FINISH - RoHS Compliant All platings are Lead Free and have .000050" Nickel underplate												COLOR 1 = Black Other Options Available
CONTACT SURFACE B = .000010" Gold C = .000030" Gold P = Gold Flash Overall												TAIL LENGTH 4 = 4.10mm [.161"]
CONTACT CENTERS E = 1mm [.039"]												MOUNTING STYLE N = No Mounting Q = Straddle Mount with Clips
NUMBER OF CONTACT POSITIONS 18, 32, 49, 82												TERMINATION TYPE HR = Card Extender for Straddle Mount
READOUT D = Dual												

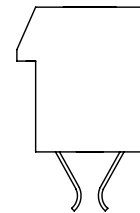
TERMINATION TYPE



SPECIFICATIONS

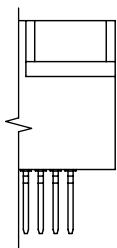
- All PCI Express parts meet the latest PCI Express specifications
- Supports 2.5 Gb/s Data Transfer Rate (per pair data bandwidth)
- Accommodates 1.57mm ± 0.20mm [.062" ± .008"] PC board
- Nylon 6T insulator
- 1.1 amp current rating per contact

READOUT

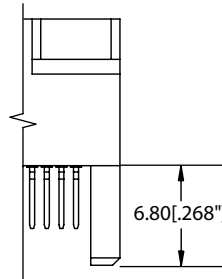


DUAL (D)

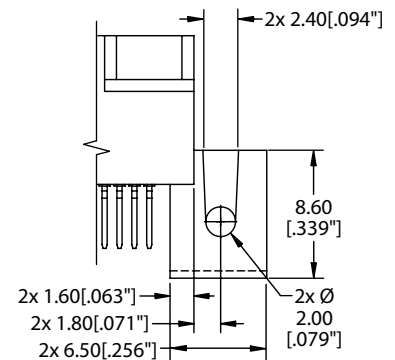
MOUNTING STYLE



NO MOUNTING (N)



WITH PEGS
('N' Mounting Style with '0' Modification Code)



WITH CLIPS (Q)



GENERAL SPECIFICATIONS

RoHS COMPLIANT

RoHS
COMPLIANT

All parts are currently manufactured with recommended materials to meet RoHS standards. All contacts have 50u" of nickel underplating, and a large selection of plating options: Pure tin matte, overall gold, or selective gold plating. For complete part number information or operating/processing temperature parameters, visit the RoHS section of our website, or refer to page 5 of this catalog.

MATERIALS

Insulator

- PBT, Valox*, Thermoplastic Polyester
- PPS, Ryton*, Polyphenylene Sulfide
- PEEK, Polyetheretherketone
- PA9T, High Temperature Polyamide
- Other materials available. Consult Factory

Contacts

Phosphor Bronze (Standard), Beryllium Copper, Beryllium Nickel, Spinodal**, Brass

Plating

Gold and/or Tin over .000050" Nickel Underplate, Lead Free

UL/CUL File Number: E64287

Cage Code: 54453

MECHANICAL

Board Insertion Force 16 oz Maximum per contact pair using .062"[1.58mm] thick steel test blade

Board Withdrawal Force 1 oz Minimum per contact pair using .062"[1.58mm] thick steel test blade

Special Insertion/Withdrawal forces available upon request

ELECTRICAL

Insulation Resistance: 5,000 Mega Ohm

Dielectric Withstanding Voltage

Contact Centers:	.039"[1mm]	.050"[1.27mm]	.100"[2.54mm]	.125"[3.18mm]	.150"[3.81mm]	.156"[3.96mm]
Voltage:	125 VDC	250 VDC	600 VDC	800 VDC	1500 VDC	1800 VDC
	225 VAC	300 VAC	750 VAC	750 VAC	900 VAC	950 VAC

Current Rating: 1 to 5 amp per contact

Voltage Drop: 30 milli volt at rated current

Contact Resistance: 30 milli ohm maximum at rated current

ENVIRONMENTAL

Solvent resistance: Perchloroethylene, Freon 113, Freon 11, Trichloroethylene

Operating Temperature:	PBT	-65° to +130°C	Phosphor Bronze	-65° to +125°C
	PPS	-65° to +200/220°C***	Beryllium Copper	-65° to +150°C
	PEEK	-65° to +250°C***	Spinodal**	-65° to +200°C
	PA9T	-65° to +150°C	Beryllium Nickel***	-65° to +300°C
(Continuous temperatures, higher for short duration. Contact Factory for details.)				

* Or equivalent.

** Consult factory for special soldering guidelines.

*** Consult factory.

PART NUMBER OPTIONS

E B M 43 D RT H - Sxxx

MATERIALS (Insulator/Contact)

- E = PBT & Phosphor Bronze
OPERATING TEMPERATURE: -65°C to +125°C
PROCESSING TEMP: 260°C FOR 10 sec. MAX.
(230°C, 30 sec.)
- R = PPS & Phosphor Bronze
OPERATING TEMPERATURE: -65°C to +125°C
PROCESSING TEMPERATURE: 260°C FOR 120 sec. MAX.
- G = PA9T & PHOSPHOR BRONZE
OPERATING TEMPERATURE: -65°C to +125°C
PROCESSING TEMPERATURE: 260° FOR 120 sec. MAX.
- H = PBT & Beryllium Copper
OPERATING TEMPERATURE: -65°C to +125°C
PROCESSING TEMP: 260°C FOR 10 sec. MAX.
(230°C, 30 sec.)
- A = PPS & Beryllium Copper
OPERATING TEMPERATURE: -65°C to +150°C
PROCESSING TEMPERATURE: 260°C FOR 120 sec. MAX.
- J = PA9T & Beryllium Copper
OPERATING TEMPERATURE: -65°C to +150°C
PROCESSING TEMPERATURE: 260°C FOR 120 sec. MAX.
- M = White PA9T/Beryllium Copper
OPERATING TEMPERATURE: -65°C to +150°C
- F = PPS & Spinodal (Consult Factory)
OPERATING TEMPERATURE: -65°C to +200°C
- C = PPS & Beryllium Nickel (Consult Factory)
OPERATING TEMPERATURE: -65°C to +200°C
PROCESSING TEMPERATURE: 260°C FOR 120 sec. MAX.
- W = PEEK & Beryllium Nickel (Consult Factory)
OPERATING TEMPERATURE: -65°C to +250°C
- N = Nylon 6T & Phosphor Bronze
OPERATING TEMPERATURE: -10°C to +85°C
PROCESSING TEMPERATURE: 260°C for 10 sec. MAX.

CONTACT FINISH - RoHS Compliant

All platings are Lead Free and have .000050" Nickel underplate

	Contact Surface	Termination
B =	.000010" Gold	.000100" Pure Tin, Matte
C =	.000030" Gold	.000100" Pure Tin, Matte
G =	.000010" Gold	.000005" Gold
Y =	.000030" Gold	.000005" Gold
	Contact Surface	Overall Plating
S =	.000010" Gold	.000010" Gold
M =	.000030" Gold	.000010" Gold
E =	.000100" Pure Tin, Matte	.000100" Pure Tin, Matte

CONTACT CENTERS

- E = 1.00mm [.039"]
B = .050" [1.27 mm]
K = .078" [1.98 mm]
C = .100" [2.54 mm]
A = .125" [3.18 mm]
J = .150" [3.84 mm]
M = .156" [3.96 mm]

NUMBER OF CONTACT POSITIONS

See applicable specification page

READOUT

- D = Dual
D = Dual Row/ Crimp to Center for Single Readout
H = Half Loaded
M = Male Edgecard

Registered Trademarks

- | | |
|----------------------------------|-------------------------------------|
| Sabic Innovative Plastics: Valox | Sullins Electronics: Zero Lead Time |
| Phillips 66: Ryton | Sullins Electronics: Sullins |
| Gardner-Denver Co.: Wire Wrap | Underwriters Labs: UL |
| RTP Compounder: PEEK | Ametek: Spinodal |

Specifications are subject to change without notice.

MODIFICATION CODE (Consult Factory)

OMIT FOR STANDARD

MOUNTING STYLE

- H = Clearance Holes, .125" [3.18mm] Dia
N = No Mounting
S = Side Mounting, .125" [3.18mm] Dia
I = #4-40 Threaded Insert
F = Floating Bobbin
W = .430" Ears, Flush Mounting, .125" [3.18mm] Dia
D = .250" Ears, Flush Mounting, .125" [3.18mm] Dia
P = Clearance Holes, .142" [3.61mm] Dia.
B = Open Card Slot
X = .430" Ears, Flush Mounting, #4-40 Threaded Insert
T = .250" Ears, Flush Mounting, #4-40 Threaded Insert
Q = Straddle Mount
Z = .250" Ears, Flush, Side Mounting

TERMINATION TYPE

Card Extender

- HR = .050" & 1mm Contact Centers
KR,KN = .025" [.64mm] Square Post, Cantilever

Dip Solder - High Profile

- RS = .025 [.64mm] Square Tail, Loop Bellows
CS, SC = .025" [.64mm] Square Tail, Hairpin Bellows
TK = .026" [.66mm] Round Tail, Loop Bellows
CT, CW = .015" x .025" Tail, Hairpin Bellows
CK = .026" [.66mm] Round Tail, Loop Bellows

- HH = 1mm [.039"] Contact Centers

- HH, HL, HN = .050" Contact Centers

- KS, KD = .025" [.64mm] Square Post, Cantilever

Dip Solder - Low Profile

- SX, SU = Crimp to Center for Single Readout
RT, RK, RY = .140" [3.56mm] Row Spacing
RX, RF, RU, RP = .200" [5.08mm] Row Spacing
RJ = .250" [6.35mm] Row Spacing

Eyelet

- RE, TE, SE = Eyelet Tail

Press Fit

- .200" [5.08mm] Row Spacing .100" [2.54mm] Row Spacing
JB = .025" [.64mm] Sq. Post JF = .025" [.64mm] Sq. Post
JC = .025" [.64mm] Sq. Post JG = .025" [.64mm] Sq. Post
JW = .025" [.64mm] Sq. Post JY = .025" [.64mm] Sq. Post
JX = .025" [.64mm] Sq. Post JZ = .025" [.64mm] Sq. Post

Right Angle

- RA, SA = Right Angle, Full Bellows
TA, TB, TM = Right Angle, Loop Bellows
CA, CB, CC = Right Angle, Hairpin Bellows
HA = Right Angle, .050" & 1mm Contact Centers
HB = Right Angle, .050" Contact Centers
KA, KE, KU, KJ = .025" [.64mm] Square Post, Cantilever

Surface Mount

- HF = Surface Mount, .050" & 1mm Contact Centers

Wire Wrap

- RM = .025" [.64mm] Square Post, Loop Bellows
CM, MC = .025" [.64mm] Square Post, Hairpin Bellows
KK = .031" [.79mm] x .062" [1.58mm] Post
KL = .031" [.79mm] x .062" [1.58mm] Post Twisted 90°
KM = .025" [.64mm] Square Post, Cantilever
WW = .045" [1.14mm] Square Post

Bi-Level Terminations

- LR = Card Extender
LT = Dip Solder
KB = Right Angle

Male Edgecards

- MW, MS = Dip Solder
MA, MV, MB = Right Angle
MD, MJ, MK = Right Angle
MR, MN = Card Extender
MM = Wire Wrap