

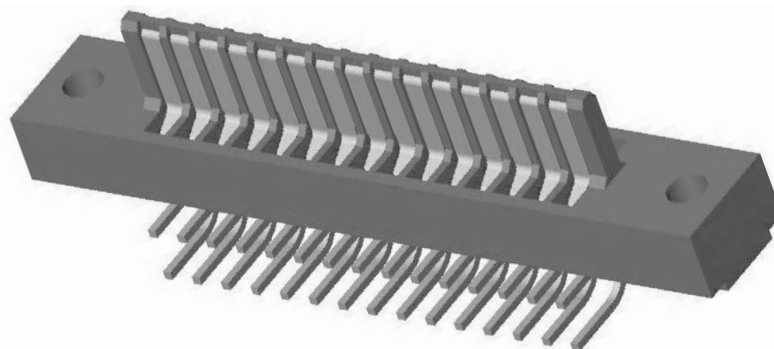


Sullins Edgecards

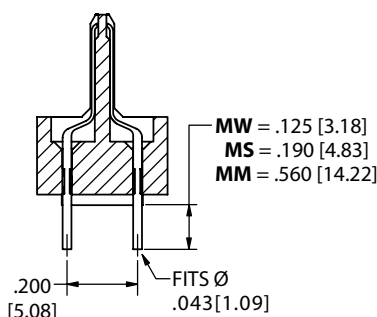
**.100" [2.54mm] Contact Centers, .540" [13.72mm] Insulator Height,
Male Edgecard, Dip Solder/Right Angle/Card Extender**

SPECIFICATIONS

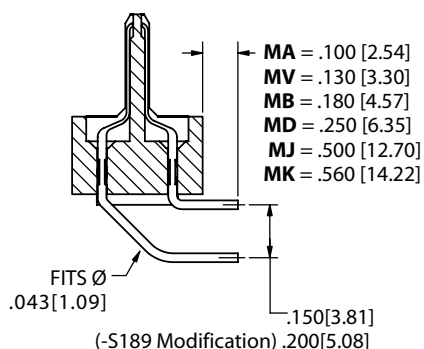
- Compatible with .431" or .610" Insulator Height Edgecards
- Mates in place of .062" [1.57] PCB
- PBT or PA9T insulator
- 3 amp current rating per contact
- 30 milli ohm maximum at rated current
- Consult Factory for other Contact Centers



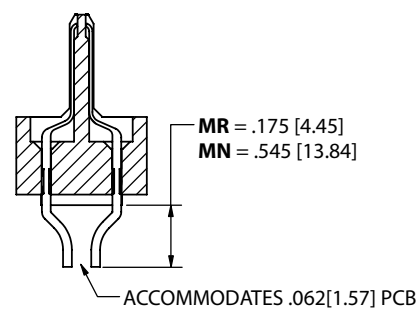
TERMINATION TYPE



**DIP SOLDER (MW, MS)
WIRE WRAP (MM)**

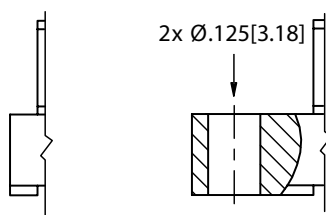


**RIGHT ANGLE
(MA, MV, MB, MD, MJ, MK)**

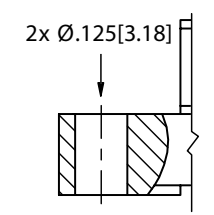


**CARD EXTENDER
(MR, MN)**

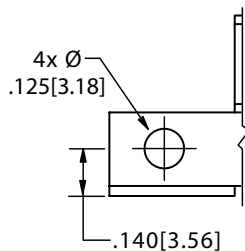
MOUNTING STYLE



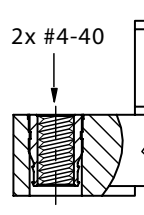
**NO
MOUNTING
(N)**



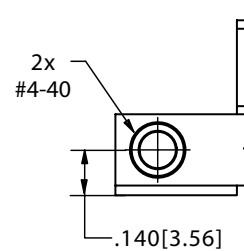
**FLUSH with
CLEARANCE HOLES
(D)**



**FLUSH, SIDE MOUNTING
with CLEARANCE HOLES
(Z)**



**FLUSH with
THREADED INSERT
(T)**



**FLUSH, with SIDE MOUNTED
THREADED INSERT
(V)**



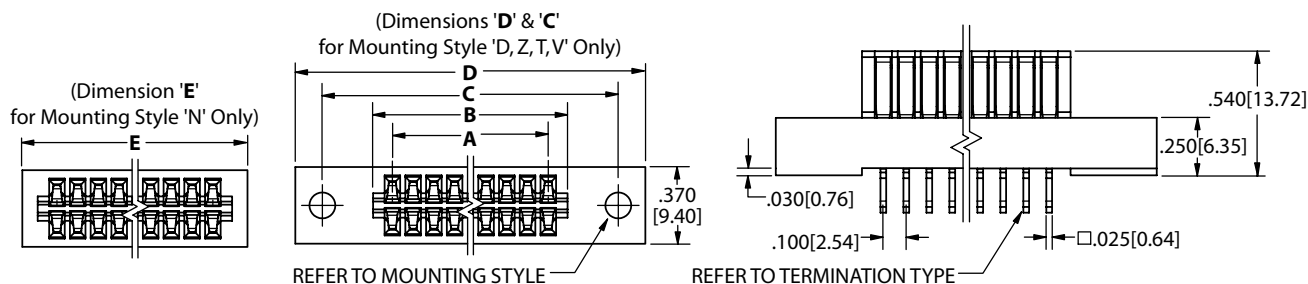
**.100" [2.54mm] Contact Centers, .540" [13.72mm] Insulator Height,
Male Edgecard, Dip Solder/Right Angle/Card Extender**

PART NUMBER CODING

<p>MATERIALS (Insulator/Contact)</p> <p>E = PBT/Phosphor Bronze Operating Temperature: -65°C to 125°C Processing Temperature: 260°C for 10 seconds Max.</p> <p>G = PA9T/Phosphor Bronze Operating Temperature: -65°C to 150°C Processing Temperature: 260°C for 120 seconds Max.</p> <p>CONTACT FINISH - RoHS Compliant</p> <p>All platings are Lead Free and have .000050" Nickel underplate</p> <table border="0"> <tr> <td>Contact Surface</td> <td>Termination</td> </tr> <tr> <td>B = .000010" Gold</td> <td>.000100" Pure Tin, Matte</td> </tr> <tr> <td>C = .000030" Gold</td> <td>.000100" Pure Tin, Matte</td> </tr> <tr> <td>Y = .000030" Gold</td> <td>.000005" Gold</td> </tr> </table> <p>CONTACT CENTERS C = .100" [2.54mm]</p> <p>NUMBER OF CONTACT POSITIONS 04 thru 60 Positions (Contact Factory for Positions Not Shown)</p>	Contact Surface	Termination	B = .000010" Gold	.000100" Pure Tin, Matte	C = .000030" Gold	.000100" Pure Tin, Matte	Y = .000030" Gold	.000005" Gold	<p>MODIFICATIONS (Consult Factory) Omit for Standard -S189 = .200" Row Spacing (Right Angle Only)</p> <p>MOUNTING STYLE (Opposite Page) N = No Mounting D = .250" Ears, Flush Mounting, .125" [3.18mm] Dia Z = .250" Ears, Flush, Side Mounting T = .250" Ears, Flush Mounting, #4-40 Threaded Insert V = Flush, Side Mounting, #4-40 Threaded Insert</p> <p>TERMINATION TYPE (Opposite Page) MW, MS = Dip Solder MM = Wire Wrap MA, MV, MB = Right Angle MD, MJ, MK = Right Angle MR, MN = Card Extender</p> <p>M = Male Edgecard</p>
Contact Surface	Termination								
B = .000010" Gold	.000100" Pure Tin, Matte								
C = .000030" Gold	.000100" Pure Tin, Matte								
Y = .000030" Gold	.000005" Gold								

DIMENSIONS

Dimensions in [] are in millimeters, all others are in inches.



POSITIONS/ CONTACTS	INCHES					[MILLIMETERS]				
	A±.008	B±.008	C±.010	D±.020	E±.020 'N' Mtg. Only	A±0.20	B±0.20	C±0.25	D±0.51	E±0.51 'N' Mtg. Only
04/08	0.300	0.486	0.975	1.236	0.656	7.62	12.34	24.77	31.39	16.66
05/10	0.400	0.586	1.075	1.336	0.756	10.16	14.88	27.31	33.93	19.20
06/12	0.500	0.686	1.175	1.436	0.856	12.70	17.42	29.85	36.47	21.74
07/14	0.600	0.786	1.275	1.536	0.956	15.24	19.96	32.39	39.01	24.28
08/16	0.700	0.886	1.375	1.636	1.056	17.78	22.50	34.93	41.55	26.82
10/20	0.900	1.086	1.575	1.836	1.256	22.86	27.58	40.01	46.63	31.90
12/24	1.100	1.286	1.775	2.036	1.456	27.94	32.66	45.09	51.71	36.98
13/26	1.200	1.386	1.875	2.136	1.556	30.48	35.20	47.63	54.25	39.52
15/30	1.400	1.586	2.075	2.336	1.756	35.56	40.28	52.71	59.33	44.60
17/34	1.600	1.786	2.275	2.536	1.956	40.64	45.36	57.79	64.41	49.68
18/36	1.700	1.886	2.375	2.636	2.056	43.18	47.90	60.33	66.95	52.22
19/38	1.800	1.986	2.475	2.736	2.156	45.72	50.44	62.87	69.49	54.76
20/40	1.900	2.086	2.575	2.836	2.256	48.26	52.98	65.41	72.03	57.30
22/44	2.100	2.286	2.775	3.036	2.456	53.34	58.06	70.49	77.11	62.38
23/46	2.200	2.386	2.875	3.136	2.556	55.88	60.60	73.03	79.65	64.92
24/48	2.300	2.486	2.975	3.236	2.656	58.42	63.14	75.57	82.19	67.46
25/50	2.400	2.586	3.075	3.336	2.756	60.96	65.68	78.11	84.73	70.00
28/56	2.700	2.886	3.375	3.636	3.056	56.58	73.30	85.73	92.35	77.62
30/60	2.900	3.086	3.575	3.836	3.256	73.66	78.38	90.81	97.43	82.70
31/62	3.000	3.186	3.675	3.936	3.356	76.20	80.92	93.35	99.97	85.24
35/70	3.400	3.586	4.075	4.336	3.756	86.36	91.08	103.51	110.13	95.40
36/72	3.500	3.686	4.175	4.436	3.856	88.90	93.62	106.05	112.67	97.94
40/80	3.900	4.086	4.575	4.836	4.256	99.06	103.78	116.21	122.83	108.10
43/86	4.200	4.386	4.875	5.136	4.556	106.68	111.40	123.83	130.45	115.72
44/88	4.300	4.486	4.975	5.236	4.656	109.22	113.94	126.37	132.99	118.26
49/98	4.800	4.986	5.475	5.736	5.156	121.92	126.64	139.07	145.69	130.96
50/100	4.900	5.086	5.575	5.836	5.256	124.46	129.18	141.61	148.23	133.50
52/104	5.100	5.286	5.775	6.036	5.456	129.54	134.26	146.69	153.31	138.58
55/110	5.400	5.586	6.075	6.336	5.756	137.16	141.88	154.31	160.93	146.20
56/112*	5.500	5.686	6.175	6.436	5.856	139.70	144.42	156.85	163.47	148.74
57/114*	5.600	5.786	6.275	6.536	5.956	142.24	146.96	159.39	166.01	151.28
58/116*	5.700	5.886	6.375	6.636	6.056	144.78	149.50	161.93	168.55	153.82
59/118*	5.800	5.986	6.475	6.736	6.156	147.32	152.04	164.47	171.09	156.36
60/120*	5.900	6.086	6.575	6.836	6.256	149.86	154.58	167.01	173.63	158.90

* Available in 'N' Mounting Only



GENERAL SPECIFICATIONS

RoHS COMPLIANT

RoHS
COMPLIANT

All parts are currently manufactured with recommended materials to meet RoHS standards. All contacts have 50u" of nickel underplating, and a large selection of plating options: Pure tin matte, overall gold, or selective gold plating. For complete part number information or operating/processing temperature parameters, visit the RoHS section of our website, or refer to page 5 of this catalog.

MATERIALS

Insulator

- PBT, Valox*, Thermoplastic Polyester
- PPS, Ryton*, Polyphenylene Sulfide
- PEEK, Polyetheretherketone
- PA9T, High Temperature Polyamide
- Other materials available. Consult Factory

Contacts

Phosphor Bronze (Standard), Beryllium Copper, Beryllium Nickel, Spinodal**, Brass

Plating

Gold and/or Tin over .000050" Nickel Underplate, Lead Free

UL/CUL File Number: E64287

Cage Code: 54453

MECHANICAL

Board Insertion Force 16 oz Maximum per contact pair using .062"[1.58mm] thick steel test blade

Board Withdrawal Force 1 oz Minimum per contact pair using .062"[1.58mm] thick steel test blade

Special Insertion/Withdrawal forces available upon request

ELECTRICAL

Insulation Resistance: 5,000 Mega Ohm

Dielectric Withstanding Voltage

Contact Centers:	.039"[1mm]	.050"[1.27mm]	.100"[2.54mm]	.125"[3.18mm]	.150"[3.81mm]	.156"[3.96mm]
Voltage:	125 VDC	250 VDC	600 VDC	800 VDC	1500 VDC	1800 VDC
	225 VAC	300 VAC	750 VAC	750 VAC	900 VAC	950 VAC

Current Rating: 1 to 5 amp per contact

Voltage Drop: 30 milli volt at rated current

Contact Resistance: 30 milli ohm maximum at rated current

ENVIRONMENTAL

Solvent resistance: Perchloroethylene, Freon 113, Freon 11, Trichloroethylene

Operating Temperature:	PBT	-65° to +130°C	Phosphor Bronze	-65° to +125°C
	PPS	-65° to +200/220°C***	Beryllium Copper	-65° to +150°C
	PEEK	-65° to +250°C***	Spinodal**	-65° to +200°C
	PA9T	-65° to +150°C	Beryllium Nickel***	-65° to +300°C
(Continuous temperatures, higher for short duration. Contact Factory for details.)				

* Or equivalent.

** Consult factory for special soldering guidelines.

*** Consult factory.



PART NUMBER OPTIONS

MATERIALS (Insulator/Contact)		E	B	M	43	D	RT	H	- Sxxx	MODIFICATION CODE (Consult Factory)	
E = PBT & Phosphor Bronze OPERATING TEMPERATURE: -65°C to +125°C PROCESSING TEMP: 260°C FOR 10 sec. MAX. (230°C, 30 sec.)										OMIT FOR STANDARD	
R = PPS & Phosphor Bronze OPERATING TEMPERATURE: -65°C to +125°C PROCESSING TEMPERATURE: 260°C FOR 120 sec. MAX.										MOUNTING STYLE	
G = PA9T & PHOSPHOR BRONZE OPERATING TEMPERATURE: -65°C to +125°C PROCESSING TEMPERATURE: 260° FOR 120 sec. MAX.										H = Clearance Holes, .125" [3.18mm] Dia	
H = PBT & Beryllium Copper OPERATING TEMPERATURE: -65°C to +125°C PROCESSING TEMP: 260°C FOR 10 sec. MAX. (230°C, 30 sec.)										N = No Mounting	
A = PPS & Beryllium Copper OPERATING TEMPERATURE: -65°C to +150°C PROCESSING TEMPERATURE: 260°C FOR 120 sec. MAX.										S = Side Mounting, .125" [3.18mm] Dia	
J = PA9T & Beryllium Copper OPERATING TEMPERATURE: -65°C to +150°C PROCESSING TEMPERATURE: 260°C FOR 120 sec. MAX.										I = #4-40 Threaded Insert	
M = White PA9T/Beryllium Copper OPERATING TEMPERATURE: -65°C to +150°C										F = Floating Bobbin	
F = PPS & Spinodal (Consult Factory) OPERATING TEMPERATURE: -65°C to +200°C										W = .430" Ears, Flush Mounting, .125" [3.18mm] Dia	
C = PPS & Beryllium Nickel (Consult Factory) OPERATING TEMPERATURE: -65°C to +200°C PROCESSING TEMPERATURE: 260°C FOR 120 sec. MAX.										D = .250" Ears, Flush Mounting, .125" [3.18mm] Dia	
W = PEEK & Beryllium Nickel (Consult Factory) OPERATING TEMPERATURE: -65°C to +250°C										P = Clearance Holes, .142" [3.61mm] Dia.	
N = Nylon 6T & Phosphor Bronze OPERATING TEMPERATURE: -10°C to +85°C PROCESSING TEMPERATURE: 260°C for 10 sec. MAX.										B = Open Card Slot	
										X = .430" Ears, Flush Mounting, #4-40 Threaded Insert	
										T = .250" Ears, Flush Mounting, #4-40 Threaded Insert	
										Q = Straddle Mount	
										Z = .250" Ears, Flush, Side Mounting	
										TERMINATION TYPE	
										Card Extender	
										HR = .050" & 1mm Contact Centers	
										KR,KN = .025" [.64mm] Square Post, Cantilever	
										Dip Solder - High Profile	
										RS = .025 [.64mm] Square Tail, Loop Bellows	
										CS, SC = .025" [.64mm] Square Tail, Hairpin Bellows	
										TK = .026" [.66mm] Round Tail, Loop Bellows	
										CT, CW = .015" x .025" Tail, Hairpin Bellows	
										CK = .026" [.66mm] Round Tail, Loop Bellows	
										HH = 1mm [.039"] Contact Centers	
										HH, HL, HN = .050" Contact Centers	
										KS, KD = .025" [.64mm] Square Post, Cantilever	
										Dip Solder - Low Profile	
										SX, SU = Crimp to Center for Single Readout	
										RT, RK, RY = .140" [3.56mm] Row Spacing	
										RX, RF, RU, RP = .200" [5.08mm] Row Spacing	
										RJ = .250" [6.35mm] Row Spacing	
										Eyelet	
										RE, TE, SE = Eyelet Tail	
										Press Fit	
										.200" [5.08mm] Row Spacing .100" [2.54mm] Row Spacing	
										JB = .025" [.64mm] Sq. Post JF = .025" [.64mm] Sq. Post	
										JC = .025" [.64mm] Sq. Post JG = .025" [.64mm] Sq. Post	
										JW = .025" [.64mm] Sq. Post JY = .025" [.64mm] Sq. Post	
										JX = .025" [.64mm] Sq. Post JZ = .025" [.64mm] Sq. Post	
										Right Angle	
										RA, SA = Right Angle, Full Bellows	
										TA, TB, TM = Right Angle, Loop Bellows	
										CA, CB, CC = Right Angle, Hairpin Bellows	
										HA = Right Angle, .050" & 1mm Contact Centers	
										HB = Right Angle, .050" Contact Centers	
										KA, KE, KU, KJ = .025" [.64mm] Square Post, Cantilever	
										Surface Mount	
										HF = Surface Mount, .050" & 1mm Contact Centers	
										Wire Wrap	
										RM = .025" [.64mm] Square Post, Loop Bellows	
										CM, MC = .025" [.64mm] Square Post, Hairpin Bellows	
										KK = .031" [.79mm] x .062" [1.58mm] Post	
										KL = .031" [.79mm] x .062" [1.58mm] Post Twisted 90°	
										KM = .025" [.64mm] Square Post, Cantilever	
										WW = .045" [1.14mm] Square Post	
										Bi-Level Terminations	
										LR = Card Extender	
										LT = Dip Solder	
										KB = Right Angle	
										Male Edgecards	
										MW, MS = Dip Solder	
										MA, MV, MB = Right Angle	
										MD, MJ, MK = Right Angle	
										MR, MN = Card Extender	
										MM = Wire Wrap	

CONTACT FINISH - RoHS Compliant

All platings are Lead Free and have .000050" Nickel underplate

Contact Surface		Termination	
B =	.000010" Gold	.000100" Pure Tin, Matte	
C =	.000030" Gold	.000100" Pure Tin, Matte	
G =	.000010" Gold	.000005" Gold	
Y =	.000030" Gold	.000005" Gold	
Contact Surface		Overall Plating	
S =	.000010" Gold	.000010" Gold	
M =	.000030" Gold	.000010" Gold	
E =	.000100" Pure Tin, Matte	.000100" Pure Tin, Matte	

CONTACT CENTERS

E =	1.00mm [.039"]
B =	.050" [1.27 mm]
K =	.078" [1.98 mm]
C =	.100" [2.54 mm]
A =	.125" [3.18 mm]
J =	.150" [3.84 mm]
M =	.156" [3.96 mm]

NUMBER OF CONTACT POSITIONS

See applicable specification page

READOUT

D =	Dual
D =	Dual Row/ Crimp to Center for Single Readout
H =	Half Loaded
M =	Male Edgecard

Registered Trademarks

Sabir Innovative Plastics: Valox	Sullins Electronics: Zero Lead Time
Phillips 66: Ryton	Sullins Electronics: Sullins
Gardner-Denver Co.: Wire Wrap	Underwriters Labs: UL
RTP Compounder: PEEK	Ametek: Spinodal

Specifications are subject to change without notice.