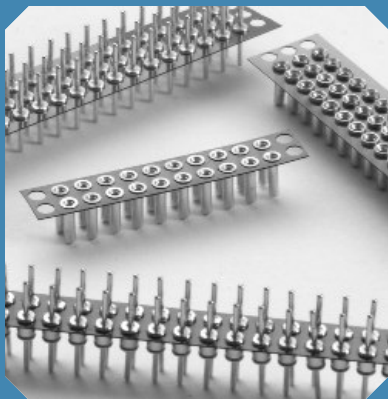


# Board to Board Connectors



## Features:

- Supplied in high temperature Peel-A-Way® removable terminal carrier.
- Male and female connectors are designed in mating pairs.
- .079/(2.00mm) row to row pitch.
- High reliability screw-machined terminals with closed-end construction for 100% anti-wicking of solder.
- For surface mount board to board options consult factory.
- Reliable mechanical support.
- Custom configurations available.

## Specifications:

### Terminals:

Brass - Copper Alloy  
(C36000) ASTM-B-16

### Contacts:

Beryllium Copper  
(C17200) ASTM-B-194


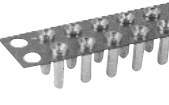




### Plating:

G - Gold over Nickel  
M - Matte Tin over Nickel  
T - Tin/Lead over Nickel

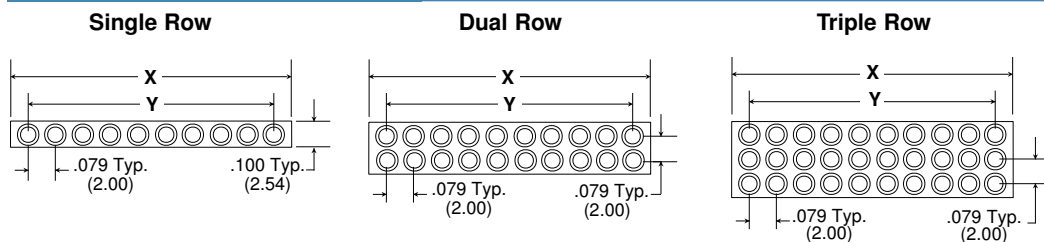
Gold per ASTM-B-488  
Matte Tin per ASTM545-97  
Tin/Lead per MIL-P-81728  
Nickel per QQ-N-290

# .079/(2.00mm) Pitch Board to Board Connectors Peel-A-Way® Insulators

## Table of Models

	Single Row	Dual Row	Triple Row	Description: Peel-A-Way® (KMS, KMD, KMT) Material: Polyimide Film Index: -269°C to 400°C (-452°F to 752°F)
Female	 KMS	 KMD	 KMT	
Male	 KMA	 KMB	 KMC	Description: Peel-A-Way® (KMA, KMB, KMC) Material: Polyimide Film Index: -269°C to 400°C (-452°F to 752°F)

## Dimensional Information

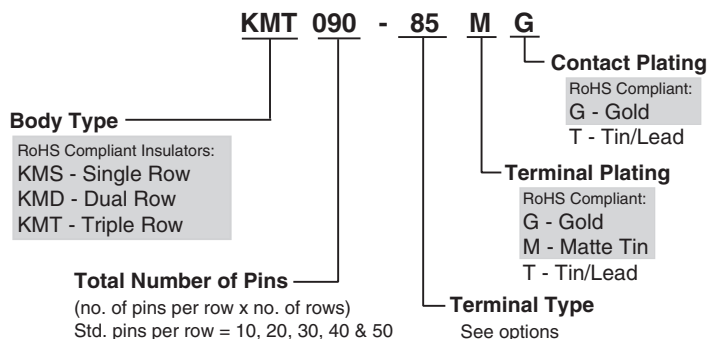


Total # of Pins per Connector			# of Pins Per Row	X in. (mm)	Y in. (mm)
Single	Dual	Triple			
010	020	030	10	.866/(22.00)	.709/(18.00)
020	040	060	20	1.654/(42.00)	1.496/(38.00)
030	060	090	30	2.441/(62.00)	2.283/(58.00)
040	080	120	40	3.228/(82.00)	3.071/(78.00)
050	100	150	50	4.016/(102.00)	3.858/(98.00)

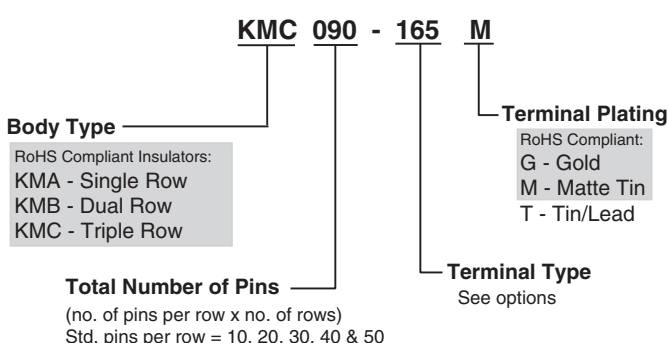
Multiply number of rows by number of pins per row for total pin count in part number.

## How To Order

### Female



### Male



Note: Terminals plated with Matte Tin are available only with Gold plated contacts.  
Quick-Turn delivery is not available on products with Matte Tin plating.

Products shown covered by patents issued and/or pending. Specifications subject to change without notice.

inch/(mm)



5 Energy Way, West Warwick, RI 02893 USA  
Tel: 800.424.9850 | 401.823.5200  
Fax: 401.823.8723  
info@advanced.com | www.advanced.com  
Catalog 16

# .079/(2.00mm) Pitch Board to Board Connectors

## Peel-A-Way® Insulators



# Board to Board Connectors

## Standard Female Quick-Turn Terminals

Additional standard and custom terminals available. See Terminals section or consult factory.

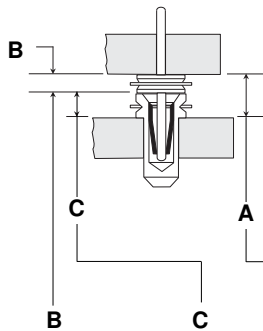
Type -85	Type -176	Type -210	Type -95
Peel-A-Way® only	Peel-A-Way® only	Peel-A-Way® only	Peel-A-Way® only (Not Quick-Turn)

## Standard Male Terminals

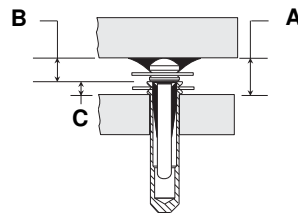
Type -165	Type -339	Type -340	Type -525
Peel-A-Way® only	Peel-A-Way® only	Peel-A-Way® only	Peel-A-Way® only

## Dimensional Information

**Figure 1**  
Thru-Hole



**Figure 2**  
Surface Mount

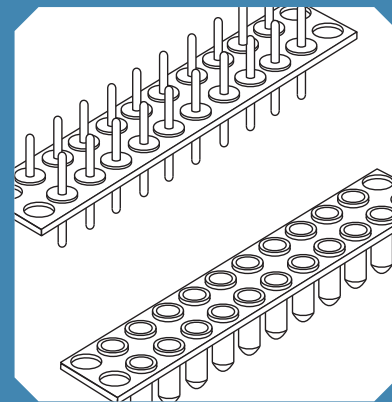
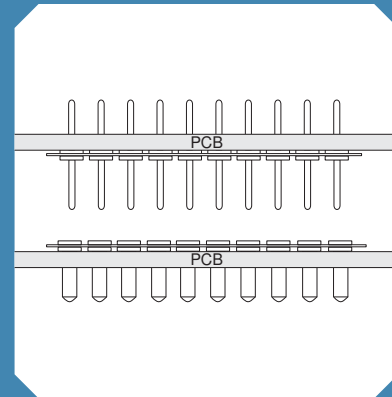


Order one each Male & Female to get the required "A" dim.

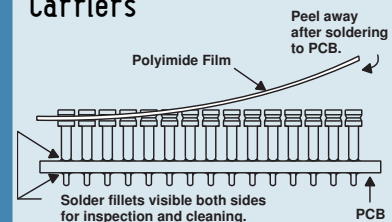
in./(mm)	in./(mm)	in./(mm)	Male Part #	Female Part #	Fig. #
.031/ (.79)	.015/ (.38)	.046/ (1.17)	KMB020-165G	KMD020-210MG	1
.031/ (.79)	.015/ (.38)	.046/ (1.17)	KMB020-525G	KMD020-210MG	2
.031/ (.79)	.031/ (.79)	.062/ (1.57)	KMB020-165G	KMD020-85MG	1
.031/ (.79)	.031/ (.79)	.062/ (1.57)	KMB020-525G	KMD020-85MG	2
.031/ (.79)	.031/ (.79)	.062/ (1.57)	KMB020-165G	KMD020-176MG	1
.031/ (.79)	.031/ (.79)	.062/ (1.57)	KMB020-525G	KMD020-176MG	2
.070/ (1.78)	.015/ (.38)	.085/ (2.16)	KMB020-321G	KMD020-210MG	1
.085/ (2.16)	.015/ (.38)	.100/ (2.54)	KMB020-322G	KMD020-210MG	1
.070/ (1.78)	.031/ (.79)	.101/ (2.57)	KMB020-321G	KMD020-85MG	1
.070/ (1.78)	.031/ (.79)	.101/ (2.57)	KMB020-321G	KMD020-176MG	1
.085/ (2.16)	.031/ (.79)	.116/ (2.95)	KMB020-322G	KMD020-85MG	1
.085/ (2.16)	.031/ (.79)	.116/ (2.95)	KMB020-322G	KMD020-176MG	1
.031/ (.79)	.155/ (3.94)	.186/ (4.72)	KMB020-165G	KMD020-95MG	1
.031/ (.79)	.155/ (3.94)	.186/ (4.72)	KMB020-525G	KMD020-95MG	2
.070/ (1.78)	.155/ (3.94)	.225/ (5.72)	KMB020-321G	KMD020-95MG	1
.085/ (2.16)	.155/ (3.94)	.240/ (6.10)	KMB020-322G	KMD020-95MG	1

20 position dual row part numbers shown. See How To Order section for ordering information.

If required "A" dimension is not shown, consult factory.



## Peel-A-Way® Removable Carriers



1. Place socket on PC board.
2. Send PC board and socket through soldering operation.
3. Peel away polyimide film carrier for complete solder joint visibility or leave in place for added stability.

## Available Online:

- RoHS Qualification Test Report



5 Energy Way, West Warwick, RI 02893 USA  
Tel: 800.424.9850 | 401.823.5200  
Fax: 401.823.8723  
info@advanced.com | www.advanced.com  
Catalog 16