

BB02-2H

## CUSTOMER PRODUCT SPECIFICATION SHEET

RoHS  
Compliant

BB02-2H :- 2.54x2.54mm (0.10"x0.10") PIN HEADER, DUAL ROW, U TYPE, THROUGH HOLE, 02 TO 80 CONTACTS

## SPECIFICATIONS

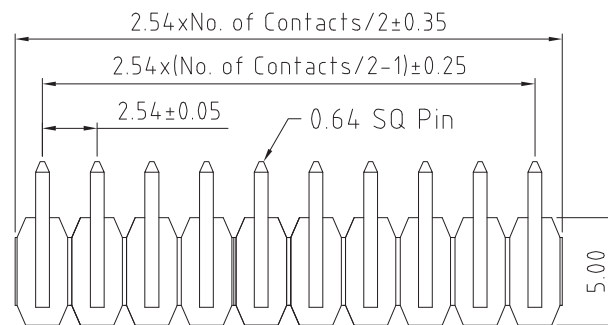
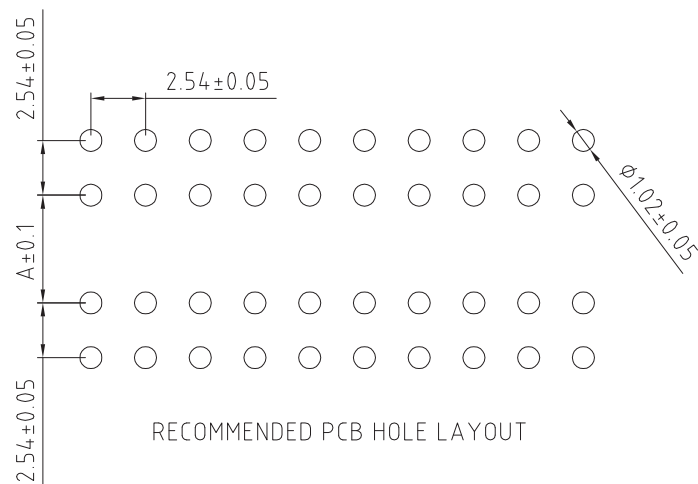
CURRENT RATING	3 AMP
VOLTAGE RATING	250V AC/DC
CONTACT RESISTANCE	20m OHMS MAX..
INSULATOR RESISTANCE	1000 MEGOHMS MIN.
DIELECTRIC WITHSTANDING	500 V AC/MINUTE
OPERATING TEMPERATURE	-40°C TO +105°C
CONTACT MATERIAL	BRASS
INSULATOR MATERIAL	THERMOPLASTIC, UL 94V-0
STANDARD : NYLON 6T	

PLATING GOLD, TIN, OR SELECTIVE OVER 30-50U" NICKEL  
SOLDERABILITY: IR REFLOW: 260°C FOR 10 SEC  
WAVE: 230°C FOR 5-10 SEC  
MANUAL SOLDER: 350°C FOR 3-5 SEC

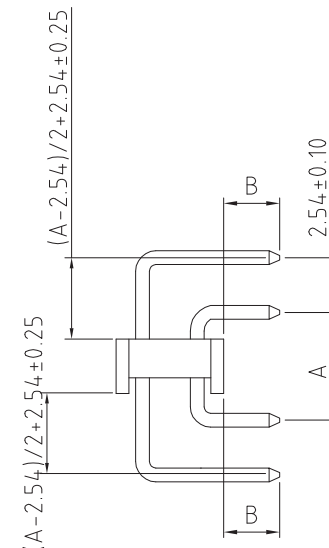
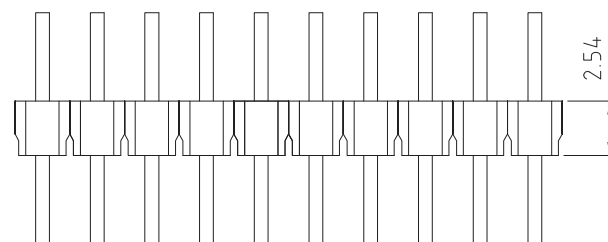
## NOTES:

1. BULK PACKAGE IN BAG.

MATES WITH: - BB02-JM BB02-KK BB02-KW  
BB02-KA BB02-KM BB02-LD  
BB02-KD BB02-KQ BB02-LE  
BB02-KF BB02-KS  
BB02-KG BB02-KT  
BB02-KH BB02-KU



(EXAMPLE OF 20 CONTACTS PART)



## HOW TO ORDER

B B 0 2 - 2 H X X 1 - X 0 1 - X X X X X X

NO. OF CONTACTS:  
02 TO 80

## CONTACT PLATING OPTIONS :

K = GOLD FLASH (STANDARD)  
T = BRIGHT TIN  
M = MATT TIN  
P = 10U" GOLD ALL OVER  
Q = 15U" GOLD ALL OVER  
R = 30U" GOLD ALL OVER

PIN LENGTH A (1/10mm)  
SPECIFY PIN LENGTH  
STANDARD = 050 = 5.0mm  
MINIMUM = 050 = 5.0mm  
MAXIMUM = 350 = 35.0mm  
TOL.: ±0.25mm

PIN LENGTH B (1/10mm)  
SPECIFY PIN LENGTH  
STANDARD = 026 = 2.6mm  
MINIMUM = 020 = 2.0mm  
MAXIMUM = 150 = 15.0mm  
TOL.: ±0.25mm

REV. DATE & DRN  
1.0 13/03/12 - NYW RELEASE  
1.1 27/02/13 - NYW  
AMEND PLATING OPTIONS.  
1.2 13/05/13 - NYW  
ADD MATING HALVES

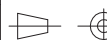
Scale: 4:1

Drawn: NYW

App'd: XXXX

Date: 13 MAY '13

THIRD ANGLE



Title PIN HEADER

Revision: 1.2

Unstated Tolerances:

X ± 0.30  
X ± 0.25  
XX ± 0.15  
XXX ± 0.10

Material  
SEE NOTE

NOT TO SCALE

Unit: mm



THIS DRAWING IS CONFIDENTIAL AND MUST NOT BE  
COPIED OR DISCLOSED WITHOUT WRITTEN CONSENT

Type: BB02-2H

BB02-2H

Drawing Number:

Sheet 1 of 1

Drawing © E and O E