

BB02-FA

## CUSTOMER PRODUCT SPECIFICATION SHEET

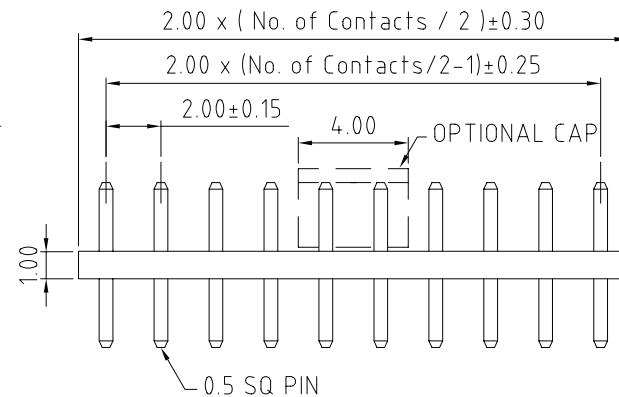
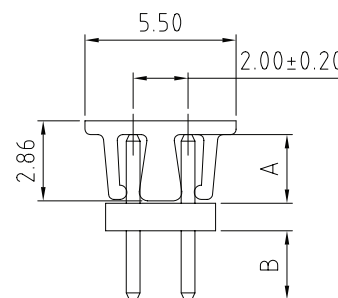
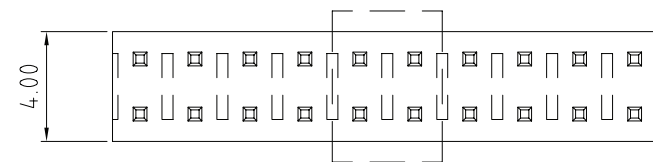
RoHS  
Compliant

BB02-FA:- 2.00mm X 2.00mm (0.079" X 0.079") PIN HDR, DUAL ROW - 06 to 80 CONTACTS, LOW PROFILE

## SPECIFICATIONS

CURRENT RATING	2 AMP
INSULATOR RESISTANCE	1000 MEGOHMS MIN.
DIELECTRIC WITHSTANDING	AC 500 V
OPERATING TEMPERATURE	-40°C TO +105°C
CONTACT MATERIAL	BRASS
INSULATOR MATERIAL	POLYESTER, UL 94V-0 STANDARD NYLON-6T
PLATING	GOLD, TIN, OR SELECTIVE OVER 30~50U" NICKEL
SOLDERABILITY	IR REFLOW: 260°C FOR 10 SEC WAVE: 230°C FOR 5-10 SEC MANNUAL SOLDER: 350°C FOR 3-5 SEC

MATES WITH :- BB02-GH BB02-GT  
BB02-GK BB02-GY  
BB02-GL BB02-GZ  
BB02-GM BB02-RG  
BB02-GP BB02-RJ  
BB02-GQ BB02-RX



## HOW TO ORDER

BB02 - FAXX1 - X0X - XXXXX

NO. OF CONTACTS  
06 TO 80

## CONTACT PLATING OPTIONS

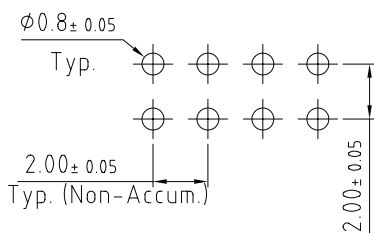
K = GOLD FLASH (STANDARD)  
A = 10U" GOLD ON CONTACT/GOLD FLASH ON TAIL  
B = 15U" GOLD ON CONTACT/GOLD FLASH ON TAIL  
C = 30U" GOLD ON CONTACT/GOLD FLASH ON TAIL  
T = BRIGHT TIN  
M = MATT TIN  
D = GOLD FLASH ON CONTACT/BRIGHT TIN ON TAIL  
E = 10U" GOLD ON CONTACT/BRIGHT TIN ON TAIL  
F = 15U" GOLD ON CONTACT/BRIGHT TIN ON TAIL  
G = 30U" GOLD ON CONTACT/BRIGHT TIN ON TAIL

## PACK OPTIONS

3 = TUBE (OR BOX)  
5 = TUBE + CAP  
6 = T & R  
8 = T & R + CAP

PIN LENGTH B (1/10mm)  
PLEASE SPECIFY PIN  
LENGTH REQUIRED  
I.E. 2.5mm = 025  
STANDARD = 025  
TOL. ±0.25mm

PIN LENGTH A (1/10mm)  
PLEASE SPECIFY PIN  
LENGTH REQUIRED  
I.E. 2.5mm = 025  
STANDARD = 025  
TOL. ±0.25mm



RECOMMENDED PC BOARD HOLE LAYOUT  
(TOLERANCE: ±0.05)

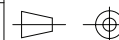
Scale: 5:1

Drawn: CHC

App'd: XXXX

Date: 30 DEC '08

THIRD ANGLE



Title PIN HEADER

Revision: 1.7

Unstated Tolerances:  
X ± 0.30  
X ± 0.25  
XX ± 0.15  
XXX ± 0.10

Material  
SEE NOTE

NOT TO SCALE

UNIT: mm



THIS DRAWING IS CONFIDENTIAL AND MUST NOT BE  
COPIED OR DISCLOSED WITHOUT WRITTEN CONSENT

Type: BB02-FA

BB02-FA

Drawing Number:

Sheet 1 of 1

Drawing © E and O E