

BB02-JC :- 2.54mm ( 0.1") ELEVATED FEMALE HEADER, SINGLE ROW 02 to 40 CONTACTS

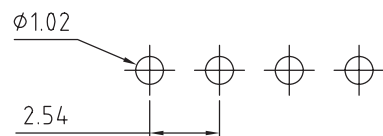
## SPECIFICATIONS

CURRENT RATING	3 AMP
INSULATOR RESISTANCE	1000 MEGOHMS MIN.
CONTACT RESISTANCE	20 MOHMS MAX
DIELECTRIC WITHSTANDING	AC 600 V
OPERATING TEMPERATURE	-40°C TO +105°C
CONTACT MATERIAL	PHOSPHOR BRONZE
INSULATOR MATERIAL	THERMOPLASTIC, UL 94V-0
	NYLON 6T : STANDARD
	PBT : SPECIAL OPTION
PLATING	GOLD, TIN OR SELECTIVE OVER 30-50U" NICKEL
SOLDERABILITY:	NYLON 6T - IR REFLOW: 260°C FOR 10 SEC
	WAVE: 230°C FOR 5-10 SEC
	MANUAL SOLDER: 350°C FOR 3-5 SEC SEC

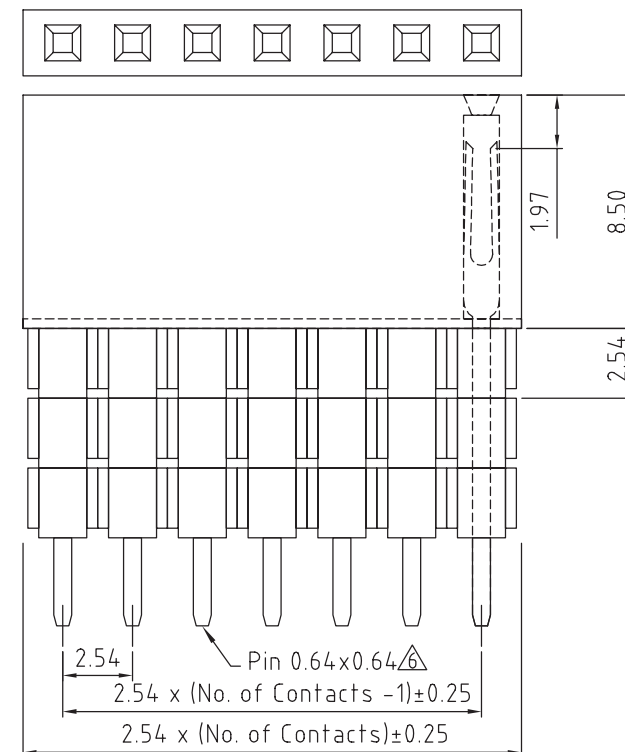
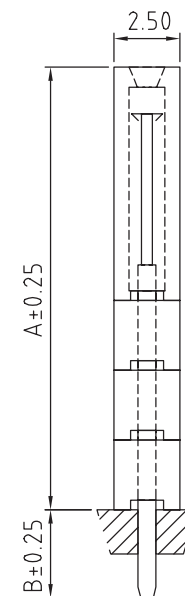
NOTES:

1. PACKED IN TRAY.   
2. RECOMMENDED MATING PIN LENGTH: 6.0MM. 

MATES WITH: BB02-HA BB02-HY  
BB02-HC BB02-TA  
BB02-HD BB02-TC  
BB02-HG BB02-TJ  
BB02-HH BB02-TK



RECOMMENDED PC BOARD HOLE LAYOUT  
(TOLERANCE:  $\pm 0.05$ )





## HOW TO ORDER



## 2 CONTACT PLATING OPTIONS

K = GOLD FLASH (STANDARD)  
A = 10U" GOLD ON CONTACT/GOLD FLASH ON TAIL  
B = 15U" GOLD ON CONTACT/GOLD FLASH ON TAIL  
C = 30U" GOLD ON CONTACT/GOLD FLASH ON TAIL  
T = BRIGHT TIN  
M = MATT TIN  
D = GOLD FLASH ON CONTACT/BRIGHT TIN ON TAIL  
E = 10U" GOLD ON CONTACT/BRIGHT TIN ON TAIL  
F = 15U" GOLD ON CONTACT/BRIGHT TIN ON TAIL  
G = 30U" GOLD ON CONTACT/BRIGHT TIN ON TAIL


PROFILE OPTIONS :

Dim A	Dim B
A =11.05	3.00 
B =11.05	7.35
C =13.59	4.85
D =16.13	2.30
E =11.05	12.20
F =13.59	9.65
G =16.13	7.10
H =18.67	4.60
J = 8.50	7.30 

INSULATOR MATERIAL  $\triangle_2$ 

6T = NYLON 6T (STANDARD)  
BLANK = PBT (Not suitable  
for new designs.)

REV.	DATE & DRN	
10	09/01/03 - SJT	RELEASE
11	20/02/06 - NYW	ADD P/N DIMENSION B.
12	20/02/06 - NYW	ADD P/N DIMENSION C.
13	20/02/06 - NYW	ADD P/N OF CONTACTS.
14	20/02/06 - NYW	REMOVE PACK OPTION.
15	17/08/06 - NYW	ADD P/N OF CONTACTS.
16	17/08/06 - NYW	ADD PLASTIC OPTION.
17	17/08/06 - NYW	ADD PLATING OPTIONS.
18	17/08/06 - NYW	DRAWING MODIFICATION.
19	23/07/07 - P/N	ADD HAT/TIN PLATING
20	23/07/07 - P/N	ADD HAT/TIN PLATING
21	17/02/09 - CHC	DRAWING MODIFICATION.
22	15/08/09 - CHC	ADD P/N DIMENSION.
23	28/08/09 - CHC	ADD P/N DIMENSION.
24	ADD NOTES 2.	
25	21/01/11 - NYW	ADD P/N DIMENSION.
26	ADD P/N DIMENSION.	
27	15/04/11 - NYW	ADD P/N DIMENSION.
28	ADD PROFILE OPTION J	

Scale: 5:1		Unstated Tolerances: X. ± 0.30 .X ± 0.25 .XX ± 0.15 .XXX ± 0.10	Material SEE NOTE
Drawn: CHC			
App'd: XXXX	Title FEMALE HEADER	NOT TO SCALE	
Date: 15 APR '11	Revision: 1.7	Unit: mm	

 <b>Infratron®</b>	Type: BB02-JC	
	BB02-JC	
	Drawing Number:	
	Sheet 1	of 1
(C) THIS DRAWING IS CONFIDENTIAL AND MUST NOT BE COPIED OR DISCLOSED WITHOUT WRITTEN CONSENT	Drawing (C)	E and O E