

BB02-JL :- 2.54mm (0.1") FEMALE HEADER, DUAL ENTRY TYPE, SINGLE ROW, THROUGH HOLE - 2 TO 40 CONTACTS

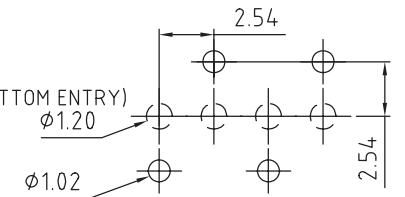
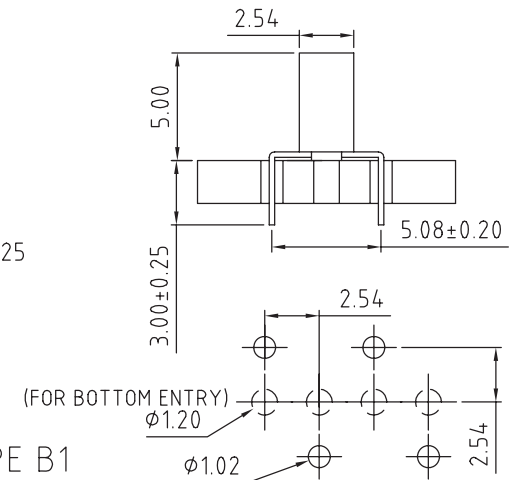
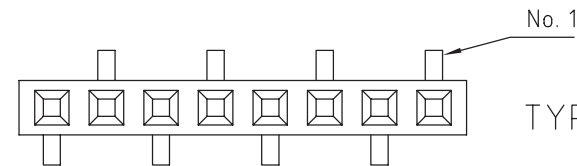
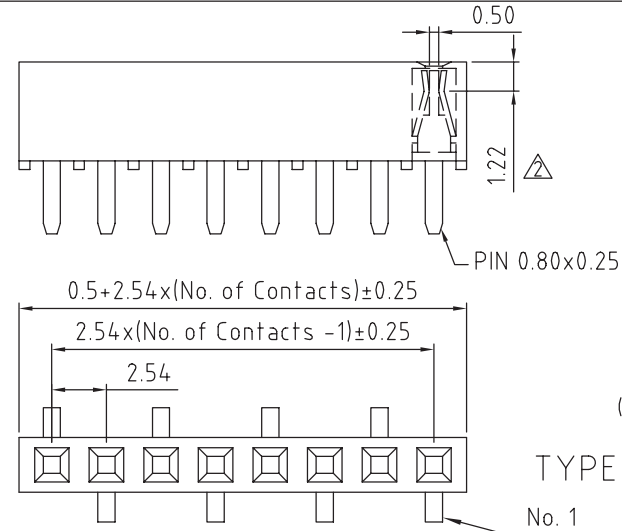
SPECIFICATIONS

CURRENT RATING	3 AMPS
INSULATOR RESISTANCE	1000 MEGOHMS MIN.
CONTACT RESISTANCE	20 M OHMS MAX
DIELECTRIC WITHSTANDING	AC 600 V
OPERATING TEMPERATURE	-40°C TO +105°F
CONTACT MATERIAL	PHOSPHOR BRONZE
INSULATOR MATERIAL	THERMOPLASTIC, UL 94V-0
	NYLON 6T : STANDARD
	PBT : SPECIAL OPTION
PLATING	GOLD, TIN OR SELECTIVE OVER 30-50U" NICKEL
SOLDERABILITY:	NYLON 6T - IR REFLOW: 260°C FOR 10 SEC
	WAVE: 230°C FOR 5-10 SEC
	MANUAL SOLDER: 350°C FOR 3-5 SEC

NOTES:

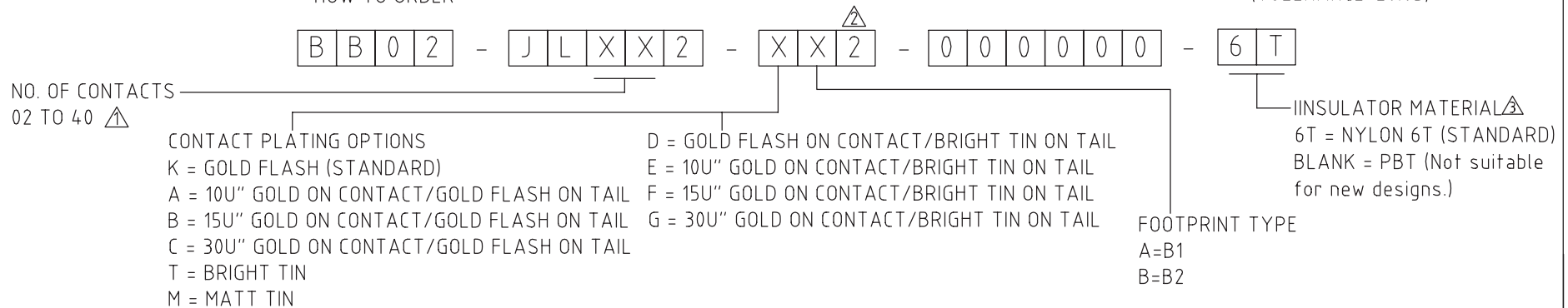
1. PACKED IN TRAY. 
2. RECOMMENDED MATING PIN LENGTH FOR TOP ENTRY: 4.5MM. 

MATES WITH: BB02-HA BB02-HY
BB02-HC BB02-TA
BB02-HD BB02-TC
BB02-HG BB02-TJ
BB02-HH BB02-TK




RECOMMENDED PC BOARD LAYOUT
(TOLERANCE: ± 0.05)

HOW TO ORDER



REV.	DATE	& DRN
01	01/07/92	- AMCI RELEASE
11	07/07/95	- NJR
12	22/07/95	- NYW AMEND NO OF CONTACTS.
13	22/07/96	- NYW AMEND PIN DIMENSION.
14	17/08/96	- NYW ADD PLASTIC OPTION. DRAWING MODIFICATION.
14	29/05/97	- NYW ADD NOTES 2.
15	27/05/98	- PN ADD MATT TIN PLATING
16	17/02/99	- CHC DRAWING MODIFICATION.

Scale: 4:1		Unstated Tolerances: X ± 0.30 X ± 0.25 XX ± 0.15 .XXX ± 0.10	Material SEE NOTE
Drawn: CHC			
App'd: XXXX	Title SOCKET		NOT TO SCALE
Date: 17 FEB '09	Revision: 1.6		Unit: mm

 **Infratron[®]**

 THIS DRAWING IS CONFIDENTIAL AND MUST NOT BE REPRODUCED OR DISCLOSED WITHOUT WRITTEN CONSENT

Type: BB02-JL	
BB02-JL	
Drawing Number:	
Sheet 1	of 1
Drawing (C)	E and O E