

SPECIFICATIONS

CURRENT RATING: 1.0AMP

INSULATOR RESISTANCE: 500 MEGOHMS MIN.

DIELECTRIC WITHSTANDING: AC 200 V

CONTACT RESISTANCE: 40m OHMS MAX.

OPERATING TEMPERATURE: -40°C TO +105°C

CONTACT MATERIAL: PHOSPHOR BRONZE

INSULATOR MATERIAL: POLYESTER UL 94V-0

STANDARD: LCP

PLATING: GOLD OR TIN OVER 30-50U" NICKEL

SOLDERABILITY      IR REFLOW: 280°C FOR 10 SEC

WAVE: 250°C FOR 5-10 SEC

MANUAL SOLDER: 380°C FOR 3-5 SEC

PACKAGING: BULK IN TUBE OR BOX.

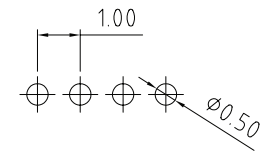
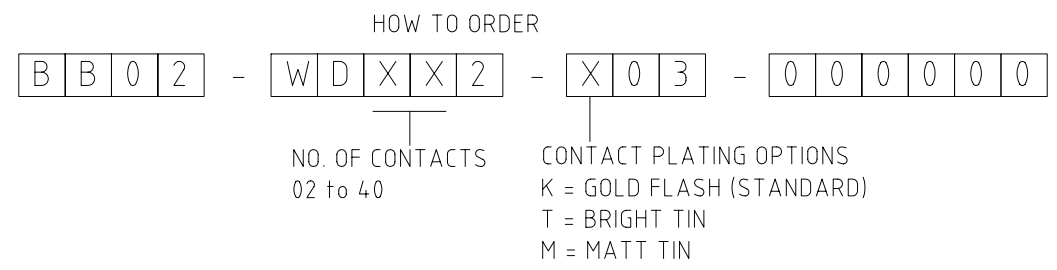
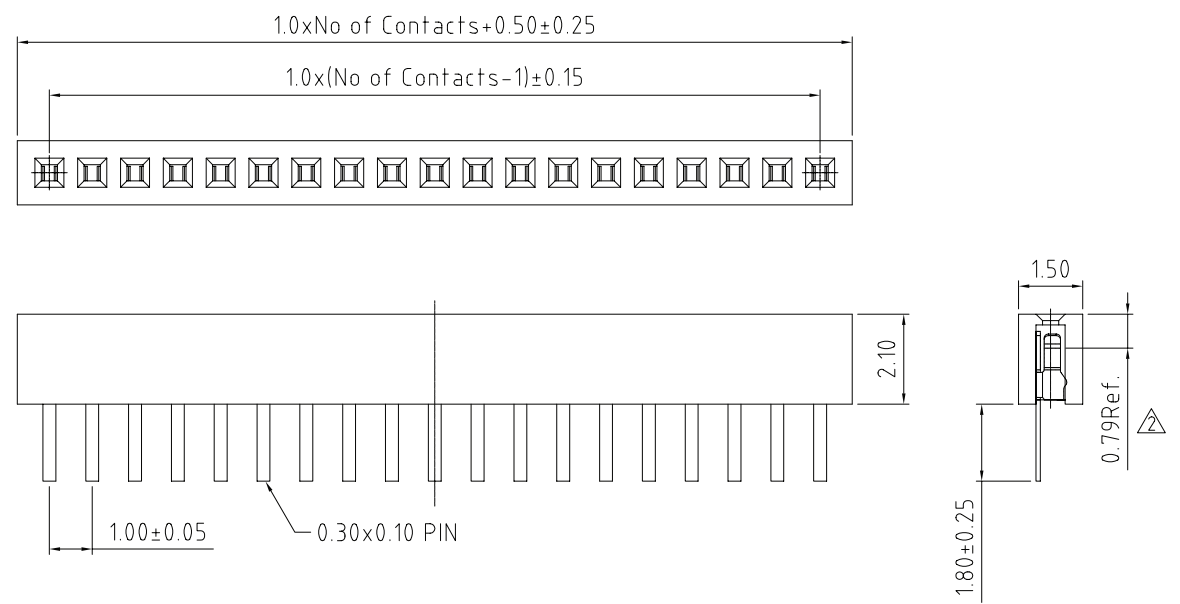
MATES WITH: - BB02-YJ      BB02-YM

BB02-YK      BB02-YN

BB02-YL

NOTES:

1. RECOMMENDED MATING PIN LENGTH = 1.5MM.



RECOMMENDED PCB HOLE LAYOUT