

BB02-YJ

## CUSTOMER PRODUCT SPECIFICATION SHEET

RoHS  
Compliant

BB02-YJ:- 1.00MM (0.039") PIN HEADER, SINGLE ROW, STRAIGHT, THROUGH HOLE TYPE, 02 TO 40 CONTACTS

## SPECIFICATIONS

CURRENT RATING: 1AMP

INSULATOR RESISTANCE: 1000 MEGOHMS MIN.

DIELECTRIC WITHSTANDING: AC 300 V

CONTACT RESISTANCE: 20m OHMS MAX.

OPERATING TEMPERATURE: -40°C TO +105°C

CONTACT MATERIAL: BRASS

INSULATOR MATERIAL: THERMOPLASTIC, UL 94 V-0

STANDARD: LCP + 30% G/F

PLATING: GOLD FLASH OR TIN OVER 30-50U" NICKEL

SOLDERABILITY IR REFLOW: 280°C FOR 10 SEC

WAVE: 250°C FOR 5-10 SEC

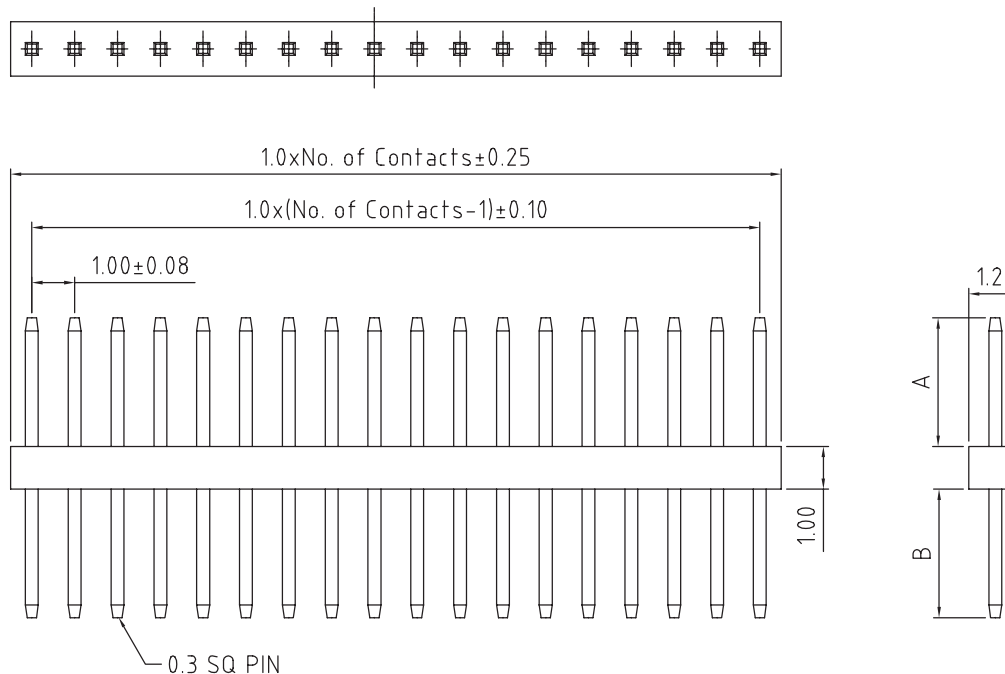
MANUAL SOLDER: 380°C FOR 3-5 SEC

PACKAGING: LOOSE IN BOX OR BAG.

MATES WITH: - BB02-WD

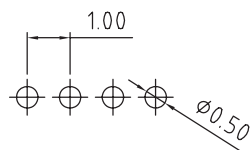
BB02-WE

BB02-WF



## HOW TO ORDER

BB02 - YJXX1 - X01 - XXXX00

NO. OF CONTACTS  
02 to 40CONTACT PLATING OPTIONS  
K = GOLD FLASH (STANDARD)  
T = BRIGHT TIN  
M = MATT TINPIN LENGTH A (1/10mm)  
PLEASE SPECIFY PIN  
LENGTH REQUIRED  
I.E. 2.5mm = 25  
TOL. ±0.25mm  
STANDARD = 15  
MINIMUM = 10  
MAXIMUM = 80PIN LENGTH B (1/10mm)  
PLEASE SPECIFY PIN  
LENGTH REQUIRED  
I.E. 2.5mm = 25  
TOL. ±0.25mm  
STANDARD = 30  
MINIMUM = 10  
MAXIMUM = 80

RECOMMENDED PCB HOLE LAYOUT

REV.	DATE & DRN
1.0	09/04/08-NYW RELEASE
1.1	11/08/08-NYW CHANGE MIN. PIN# FROM 05 TO 02.
1.2	11/08/08-NYW ADD T AND M PLATING OPTIONS.
1.3	25/12/08-NYW DRAWING MODIFICATION.
1.4	26/03/09 - NYW REMOVE NOTE 1.
1.5	19/06/09 - NYW CHANGE STANDARD A = 15.
1.6	18/08/11 - NYW ADD MIN. AND MAX. A & B PIN LENGTH.

Scale: 8:1	THIRD ANGLE	Unstated Tolerances: X. ± 0.30 .X ± 0.25 .XX ± 0.15 .XXX ± 0.10	Material SEE NOTE
Drawn: NYW			
App'd: XXX	Title: PIN HEADER	NOT TO SCALE	
Date: 18 AUG '11	Revision: 1.6	Unit: mm	

THIS DRAWING IS CONFIDENTIAL AND MUST NOT BE  
COPIED OR DISCLOSED WITHOUT WRITTEN CONSENT

Type BB02-YJ

BB02-YJ

Drawing Number:

Sheet 1 of 1

Drawing © E and O E