

CH03-AJ

CUSTOMER PRODUCT SPECIFICATION SHEET

RoHS
Compliant

CH03-AJ- SIM CARD HOLDER 6 PINS, SLIDE IN TYPE, WITH HALF METAL COVER, OPTIONAL SWITCH

FEATURES

1. GENERAL CHARACTERISTICS

DIMENSIONS: 15.85L x 16.50W x 3.44H mm
WEIGHT: APPROX. 0.70±0.2g
CONTACT PRINCIPLE: FRICTION TECHNOLOGY
OPERATING POSITION: SHAFT UP / DOWN / HORIZONTAL
MOUNTING SYSTEM: SMT TYPE OPTIONAL POST
DURABILITY: 5,000 CYCLES MIN.

2. MECHANICAL CHARACTERISTICS

INSULATION MATERIAL: THERMOPLASTIC, UL 94V-0
CONTACT MATERIAL: PHOSPHOR BRONZE
CONTACT PLATING: GOLD FLASH OVER NICKEL
METAL SHELL MATERIAL: SUS304

3. ELECTRICAL CHARACTERISTICS

CONTACT RESISTANCE: 50m OHMS TYP. 100m OHMS MAX.
INSULATION RESISTANCE: > 1000M OHMS / 500V DC
SWITCH TYPE: BLADE
RATED CURRENT: 1A MAX.
RATED VOLTAGE: 50V MAX.
WITHSTANDING DIELECTRIC VOLTAGE: 500V AC R.M.S. FOR 1 MINUTE

4. SOLDERABILITY

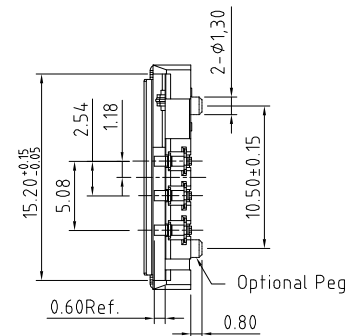
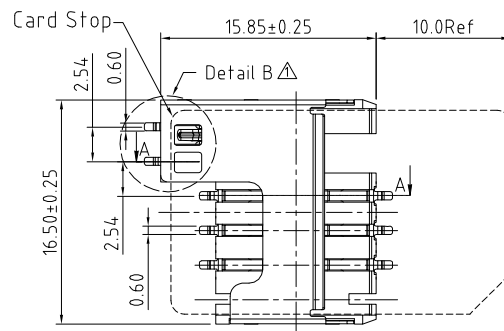
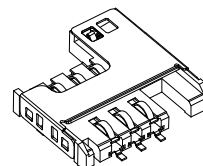
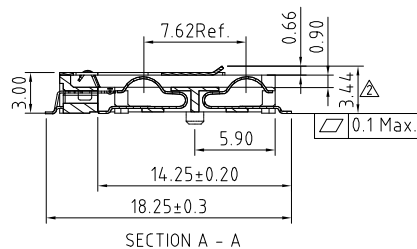
WAVE: NOT APPLICABLE
IR REFLOW: 260°C, 10 SEC. MAX.
MANUAL SOLDERING: 360°C, 3 SEC. MAX.

5. ENVIRONMENTAL CHARACTERISTICS

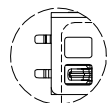
OPERATING TEMPERATURE: -40°C ~ +85°C
OPERATING HUMIDITY: 10% ~ 95% RH
STORAGE TEMPERATURE: -40°C ~ +85°C
STORAGE HUMIDITY: 10% ~ 95% RH
THERMAL SHOCK: -40°C ~ +85°C, 5 CYCLES
DAMP HEAT: 40°C, 90% RH, 240HR
SALT-MIST: 35°C, 5% NaCl, 24HR

NOTES:

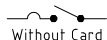
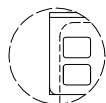
1. ACCEPTABLE SIM CARD SIZE SHOULD MEET GSM 11.11 SPECIFICATION REQUIREMENT.
2. PACKAGING: 700PCS/REEL.



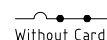
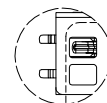
DETAIL B:

Switch Type A
(Normally Open)

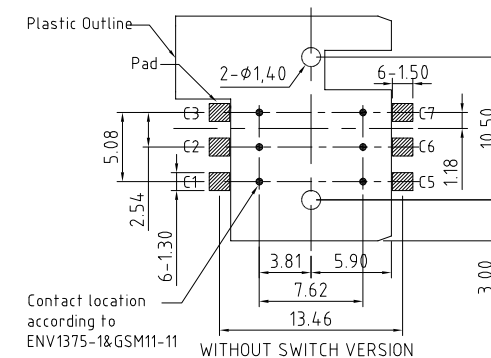
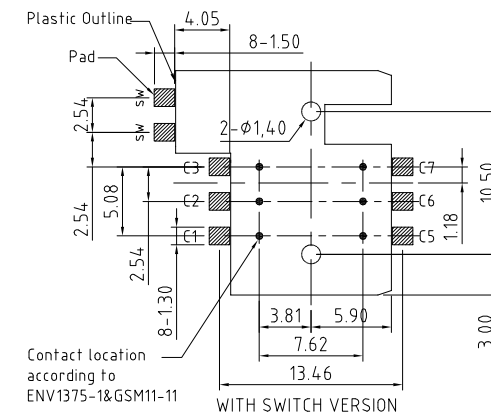
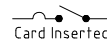
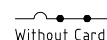
Electric Function	Defect Switch
Without Card	Open
Card Inserted	Closed

Switch Type B
(Without Switch)

Electric Function	Defect Switch
Without Card	Closed
Card Inserted	Open

Switch Type C
(Normally Closed)

Electric Function	Defect Switch
Without Card	Closed
Card Inserted	Open



RECOMMENDED PCB LAYOUT

HOW TO ORDER

C H 0 3 - A J 0 6 0 - X X R

SWITCH OPTIONS:

A = WITH SWITCH (NORMALLY OPEN)

B = WITHOUT SWITCH

△ C = WITH SWITCH (NORMALLY CLOSED)

LOCATING PEG OPTIONS:

△ A = WITH PEG

B = WITHOUT PEG

Rev. Date & Dm.
1.0 17/11/11 - NYW Release.
1.1 27/06/12 - NYW
△ Design modification.
Add normally closed switch
Add with locating peg option.
1.2 11/07/12 - NYW
△ Add overall height.

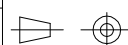
Scale: 2.5:1

Drawn: NYW

App'd: XXXX

Date: 11 JUL '12

THIRD ANGLE



Title SIM CARD ACCEPTOR

Revision: 1.2

Unstated Tolerances:
X. ±0.35
X ±0.25
XX ±0.15
XXX ±0.10

Material
SEE NOTE

NOT TO SCALE

Unit: mm

© THIS DRAWING IS CONFIDENTIAL AND MUST NOT BE
COPIED OR DISCLOSED WITHOUT WRITTEN CONSENT

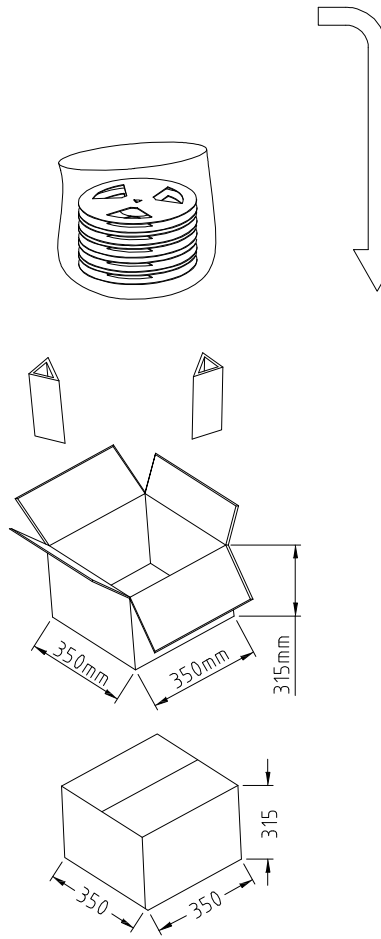
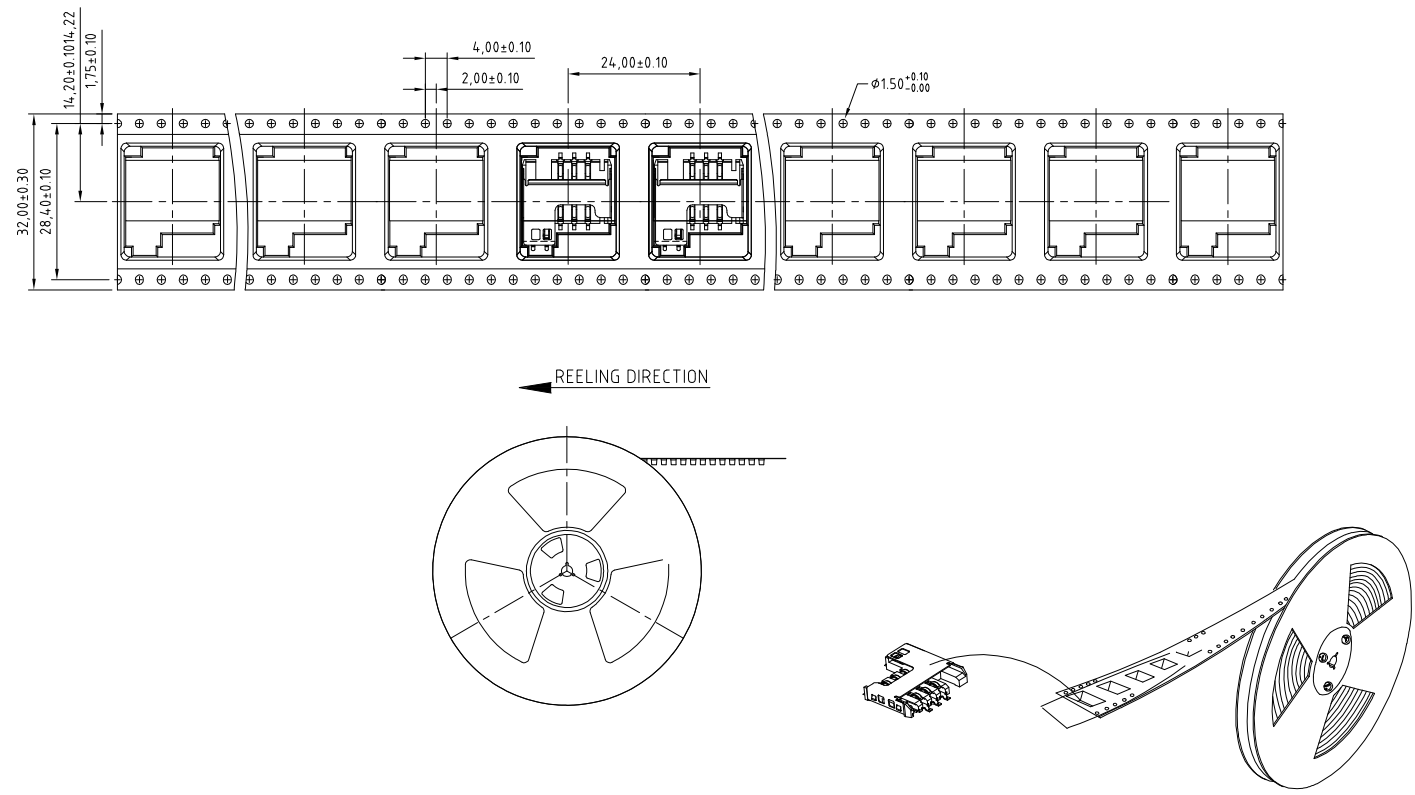

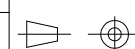
Type: CH03-AJ

CH03-AJ

Drawing Number:

Sheet 1 of 2

Drawing © E and O E

CH03-AJ		CUSTOMER PRODUCT SPECIFICATION SHEET				RoHS Compliant	
CH03-AJ : PACKAGING DRAWING							
		 <p>NOTES:</p> <ol style="list-style-type: none">1. REEL DIA.: 33CM.2. 700PCS PER REEL, GROSS WEIGHT: 1.0KG.3. 8 REELS PER FULL CARTON, GROSS WEIGHT: 8.0KG.					
REV. DATE & DRN TO 18/11/11 - NYW RELEASE	Scale:	NTS	THIRD ANGLE	Unstated Tolerances: 0 Dec Places 1 Dec Places 2 Dec Places 3 Dec Places	Material SEE NOTE		Type: CH03-AJ
	Drawn:	NYW					CH03-AJ
	App'd:	XXXX	Title	PACKAGING	NOT TO SCALE		Drawing Number:
	Date:	18 NOV. '11	Revision:	1.0	Unit: mm		Sheet 2 of 2
© THIS DRAWING IS CONFIDENTIAL AND MUST NOT BE COPIED OR DISCLOSED WITHOUT WRITTEN CONSENT						Drawing © E and O E	