

## CH03-CD : SIM CARD CONNECTOR SMT TYPE 6 CONTACTS OPTIONAL HEIGHT

## Specification

## 1.General Information

Contact principle: Friction technology

Mounting Type: SMT

Durability: 10.000 cycles min.  $\Delta$ 

Voltage Rating: 30V AC

Current Rating: 1A Max, 10uA Min

## 2.Electrical Specification

Contact Resistance: 50m ohms Max

Insulation Resistance: 1000M0hm Min

Dielectrical Withstanding Voltage: 500V AC

R.M.S. 1 Min(Sea Level)

## 3.Mechanical Specification

Contact Force: 0.2N~0.6N

Data Contact Material: Copper Alloy

Insulation Material: Thermoplastic, UL 94V-0

Data Contacts Plating: Gold Plated Over Nickel

## 4.SOLDERABILITY

WAVE: NOT APPLICABLE

IR REFLOW: 260°C, 5 SEC. MAX.  $\Delta$   $\Delta$ 

MANUAL SOLDERING: 360°C, 3 SEC. MAX.

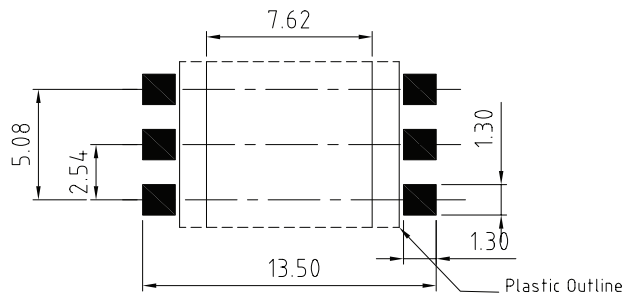
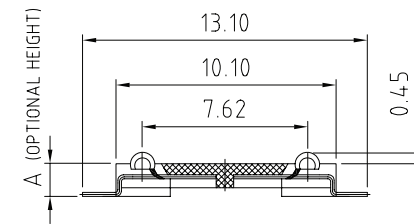
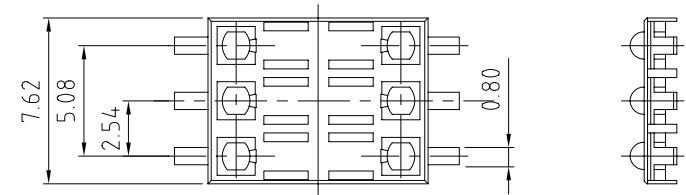
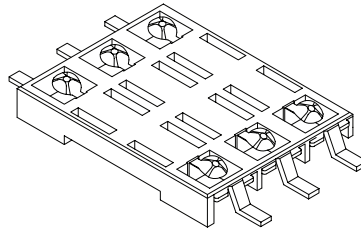
## 5.Environmental Specification

Operating Temperature: -20°C~+70°C

Operating Humidity: 20%~95% RH

## NOTES:

1. ACCEPTABLE SIM CARD SIZE SHOULD MEET GSM 11.11

SPECIFICATION REQUIREMENT.  $\Delta$ 

RECOMMENDED PCB LAYOUT

## HOW TO ORDER

CH03 - CD060 - XXX - L

A HEIGHT  
08 = 0.85  
10 = 1.00  
12 = 1.20  
15 = 1.50PACKAGING  
OPTIONS  
 $\Delta$  T = TUBE  
R = REEL

REV.	DATE & DRN
10	13/12/04 - CHC RELEASE
11	21/03/06 - NYW
12	27/04/06 - NYW
13	14/07/06 - NYW
14	23/10/06 - CHC
15	29/05/07 - CHC
16	06/12/07 - NYW
17	18/06/09 - NYW

Scale:	4:1
Drawn:	CHC
App'd:	NYW
Date:	18 JUN '09
THIRD ANGLE	
Title	SIM Card Acceptor
Revision:	1.7
Material	SEE NOTE
NOT TO SCALE	
Unit:	mm

© THIS DRAWING IS CONFIDENTIAL AND MUST NOT BE  
COPIED OR DISCLOSED WITHOUT WRITTEN CONSENT

Type:	CH03-CD
Drawing Number:	CH03-CD
Sheet 1	of 1
Drawing C	E and O E