

## CH03-KA - NANO SIM CARD CONNECTOR SMT, PUSH PULL TYPE, WITHOUT SWITCH, 6 CONTACTS

## FEATURES

## 1. GENERAL CHARACTERISTICS

DIMENSIONS: 12.30Lx10.00Wx1.50H mm

WEIGHT: APPROX. 0.53±0.2g

CONTACT PRINCIPLE: FRICTION TECHNOLOGY

MOUNTING SYSTEM: SMT TYPE (WITH PEG)

DURABILITY: 1,500 CYCLES MIN.

## 2. MECHANICAL CHARACTERISTICS

INSULATION MATERIAL: THERMOPLASTIC, UL 94V-0

CONTACT MATERIAL: PHOSPHOR BRONZE

SHELL MATERIAL: STAINLESS STEEL (SUS)

CONTACT PLATING: 3U" GOLD OVER NICKEL ON CONTACT POINT, GOLD  
FLASH ON SOLDER TAIL, NICKEL ON THE REST.

SHELL PLATING: GOLD FLASH ON HOLD DOWNS

## 3. ELECTRICAL CHARACTERISTICS

CURRENT RATING: 1A MAX.

VOLTAGE RATING: 50V MAX.

CONTACT RESISTANCE: 50m OHMS TYP. 100m OHMS MAX.

INSULATION RESISTANCE: &gt;1000M OHMS / 500V DC

DIELECTRIC WITHSTANDING VOLTAGE: 500V AC RMS, 1 MINUTE

## 3. SOLDERABILITY

WAVE: NOT APPLICABLE

VAPORPHASE: 215°C, 30 SEC. MAX.

IR REFLOW: 250°C, 5 SEC. MAX.

MANUAL SOLDERING: 370°C, 3 SEC. MAX.

## 4. ENVIRONMENTAL CHARACTERISTICS

OPERATING TEMPERATURE: -40°C ~ +85°C

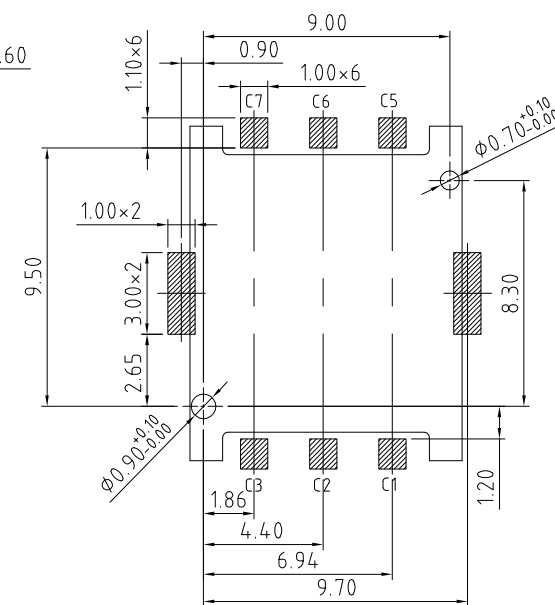
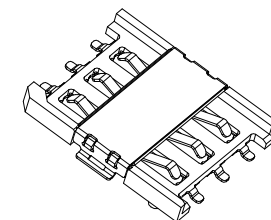
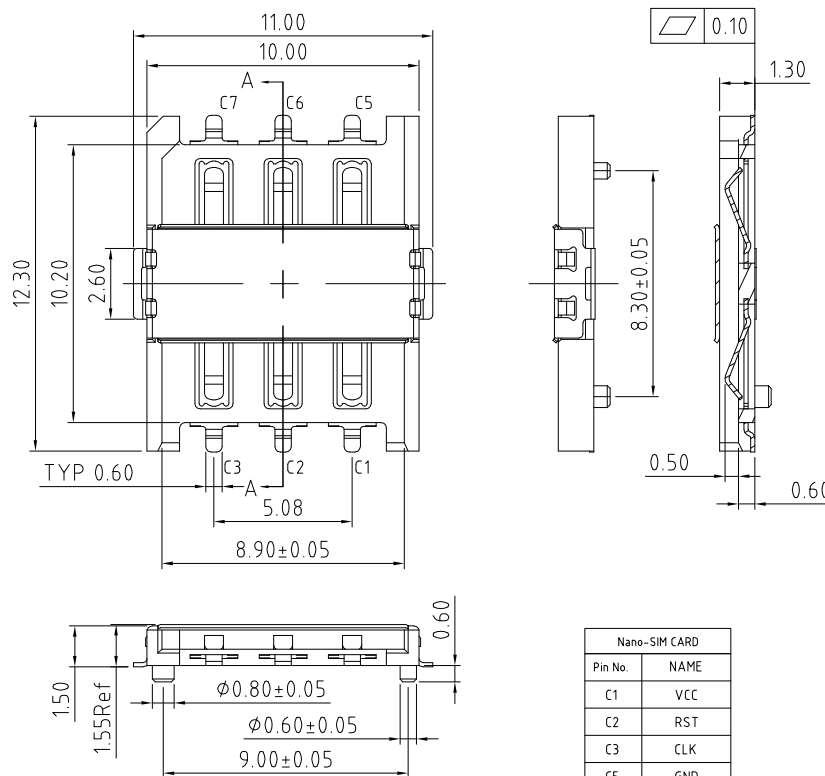
OPERATING HUMIDITY: 10% ~ 95% RH

STORAGE TEMPERATURE: -40°C ~ +85°C

STORAGE HUMIDITY: 10% ~ 95%RH

## NOTES:

1. ACCEPTABLE SIM CARD SIZE SHOULD MEET GSM 11.11  
SPECIFICATION REQUIREMENT.

(TOLERANCES: ±0.05)  
RECOMMENDED PCB LAYOUT

## HOW TO ORDER

C H 0 3 - K A 0 6 0 - 0 A R

NO. OF CONTACTS

PACKAGING TYPE:  
R = TAPE & REEL (1500PCS/REEL)

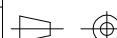
Scale: 5:1

Drawn: NYW

App'd: XXXX

Date: 3 NOV. '14

THIRD ANGLE



Title: SIM CARD ACCEPTOR

Revision: 1.2

Unstated Tolerances:  
XX ± 0.15Material  
SEE NOTE

NOT TO SCALE

Unit: mm

THIS DRAWING IS CONFIDENTIAL AND MUST NOT BE  
COPIED OR DISCLOSED WITHOUT WRITTEN CONSENT

Type: CH03-KA

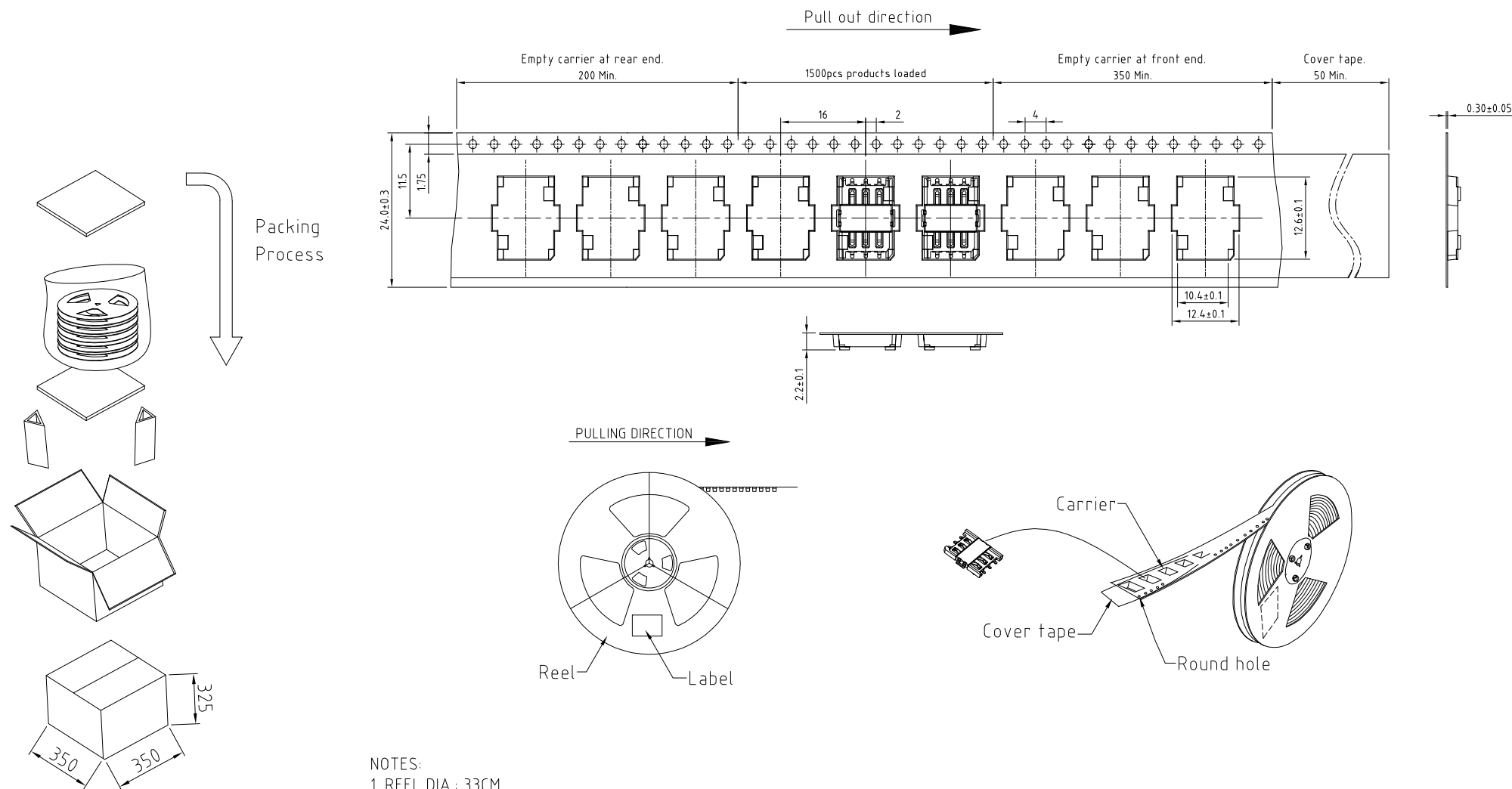
CH03-KA

Drawing Number:

Sheet 1 of 1

Drawing © E and O E

## CH03-KA - PACKAGING DRAWING



## NOTES:

1. REEL DIA.: 33CM.
2. 1500PCS PER REEL, GROSS WEIGHT: 0.7KG.
3. 10 REELS PER FULL CARTON, GROSS WEIGHT: 7.5KG.

|                   |                  |                                      |   |                      |
|-------------------|------------------|--------------------------------------|---|----------------------|
|                   | THIRD ANGLE      | Unstated<br>.X<br>.XX<br>.XXX<br>X.° | Tolerances:<br>±0.15<br>±0.10<br>±0.05<br>±1.5° | Material<br>SEE NOTE |
| Drawn: NYW        |                  |                                      |   |                      |
| App'd: XXX        | Title: PACKAGING | NOT TO SCALE                         |   |                      |
| Date: 16 SEP. '14 | Revision: 1.0    | Unit: mm                             |   |                      |



Type: CH03-KA

CH03-KA

Drawing Number:

Sheet 1 OF 1

Drawing © E and O E